



WESTWAARD

Custom Parlors

blending

Tradition & Technology



If you can dream it -We can build it.

Every Westwaard parlor is a custom parlor in the truest sense of the word.

Each site is individualized to the farmer's unique wants and needs.

From the earliest conversations, your suggestions and concerns are carefully considered and integrated into our designs.

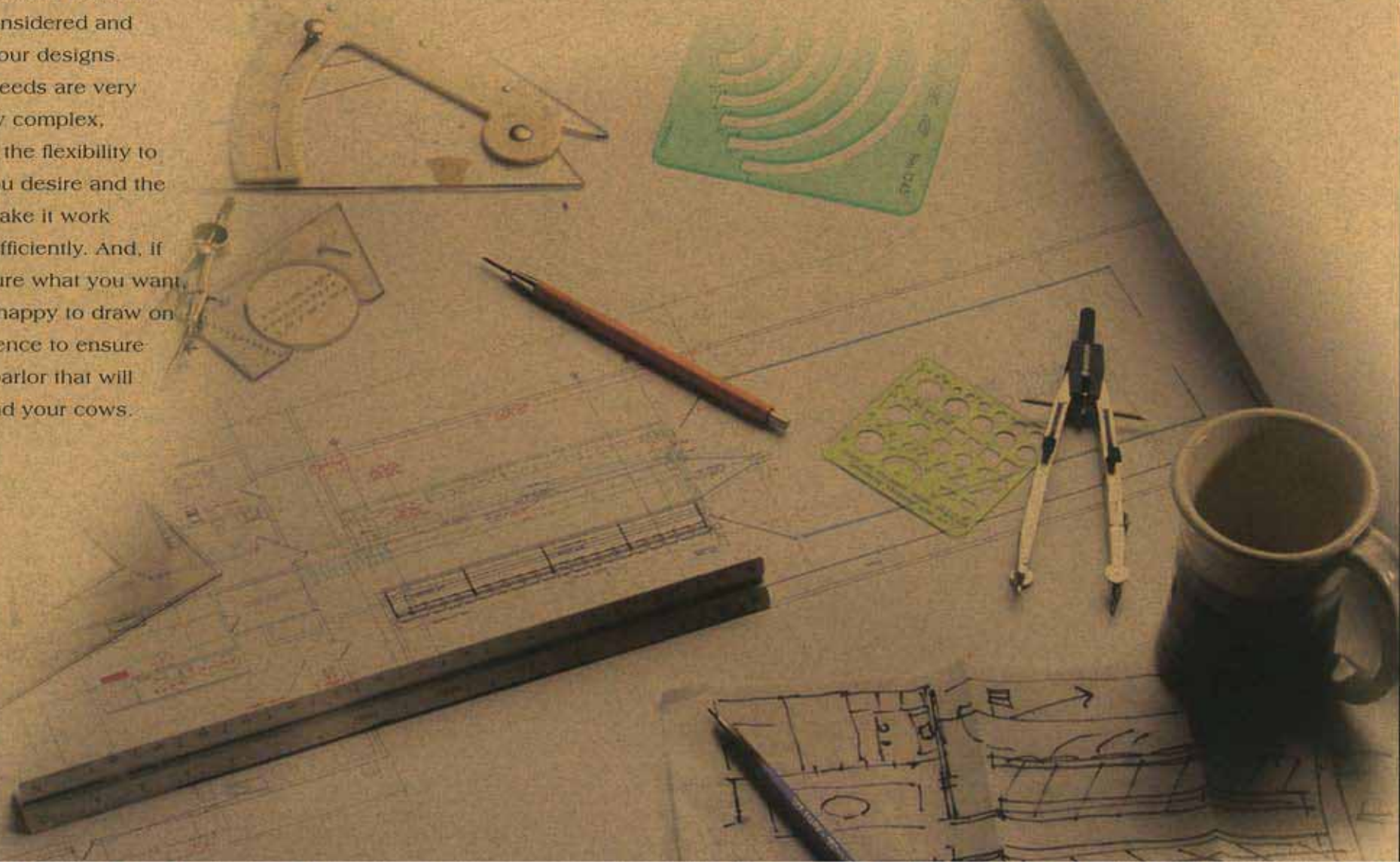
Whether your needs are very simple or highly complex,

Westwaard has the flexibility to do whatever you desire and the know-how to make it work

smoothly and efficiently. And, if you're not so sure what you want,

we are always happy to draw on our vast experience to ensure

that you get a parlor that will work for you and your cows.



Dairying has always been built on strength and integrity of a sound family heritage.

Fathers pass on not only their knowledge, but their deep-rooted values to their children and to their children's children beyond them. Every new generation adds innovation, energy, and a fresh outlook that keeps farming vital and alive decade after decade.

Westwaard's expertise comes from a family steeped in this strong dairy farming legacy, as well. Like so many of the farmers they serve, Dave and his boys have blended tradition and technology, hard work and experience to reach a new level of excellence in the dairy industry.

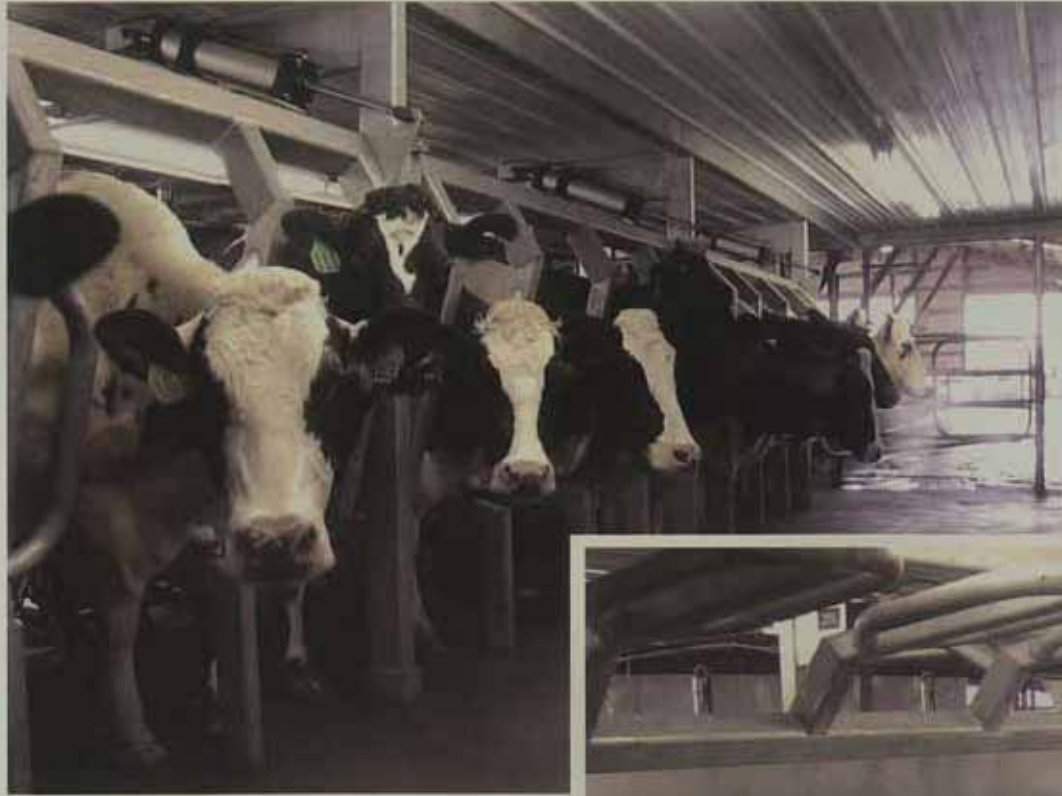


Parallel Parlor

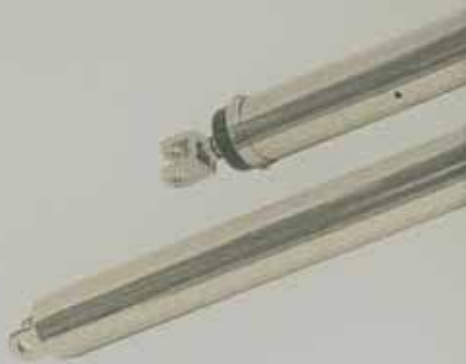


Your needs, your goals, and your budget are the most important criteria in designing the right parlor for your farm. Whether you prefer a meticulous showplace or a non-nonsense-get-the-job-done milking barn, your parlor will be designed and built with the highest level of workmanship and reliability.

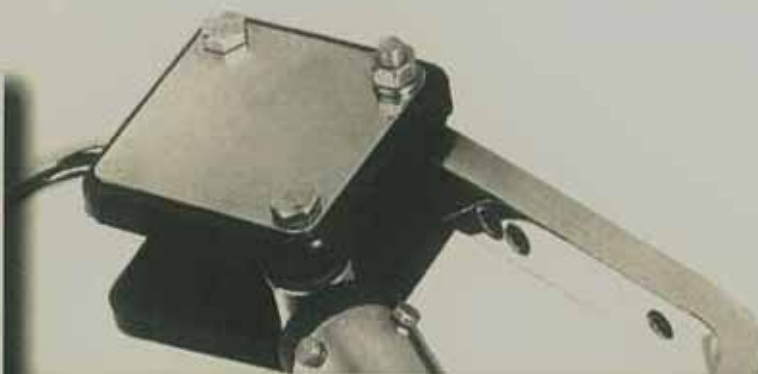
Parallel Parlor



All Westwaard parlor designs incorporate a variety of features that get you closer to your cows and help reduce stress on both you and your herd.



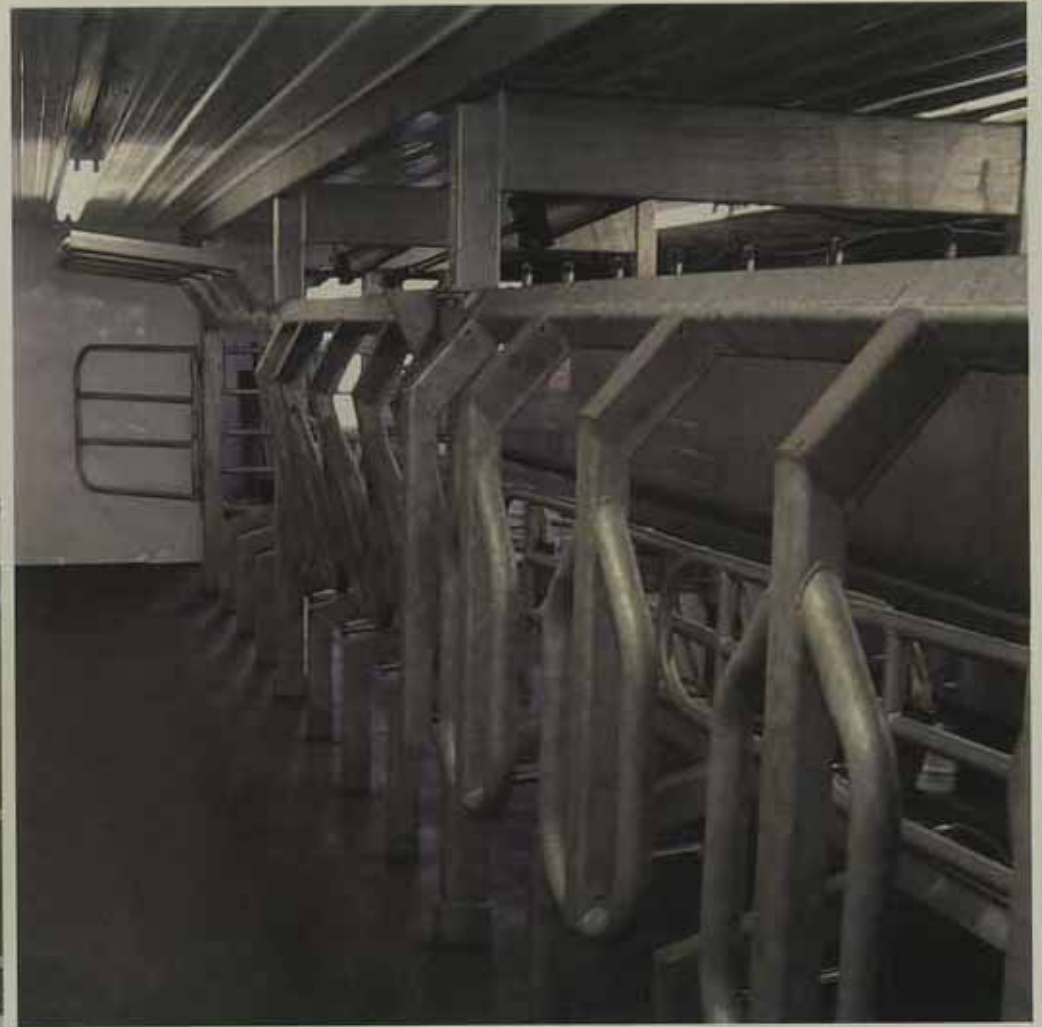
P Parallel Parlor



Optimum efficiency comes from a well-thought-out design that increases throughput and requires minimal maintenance.

P Parallel Parlor

Solid construction and rugged materials ensure a long and hassle-free life for your parlor.



**The idyllic days of cattle relaxing in the grass
by a meandering stream chewing on their cud,
as gentle breezes swirl around them are all but gone.**

Nevertheless, we are well aware that re-creating that natural cow comfort is essential for the longevity and general good health of your animals.

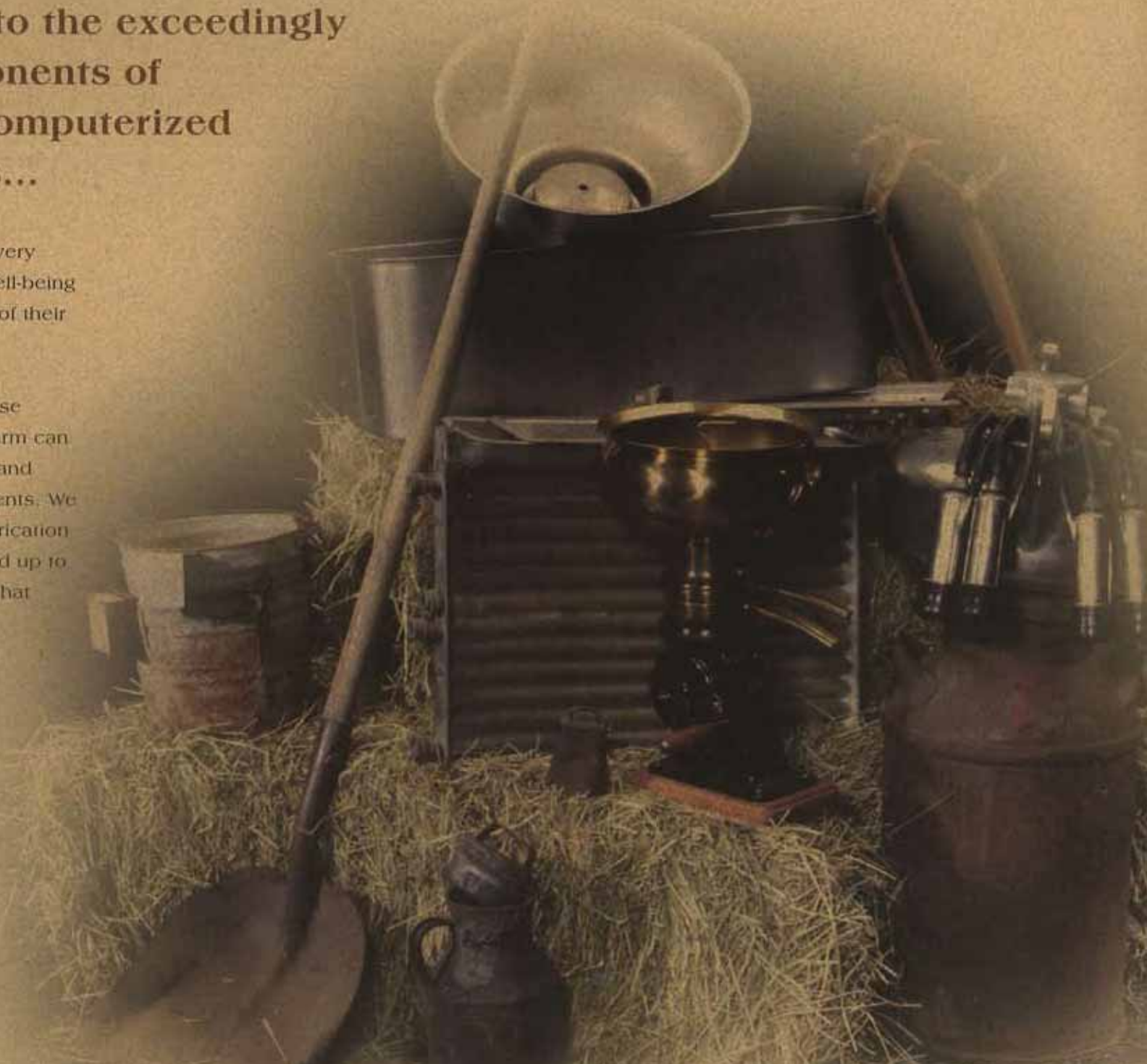
Westwaard understands the important balancing act between attending to your cow's well-being and allowing for the efficiencies required by today's dairy farm. We integrate solid solutions into every design. Whether it's a little more room, a jostle-free traffic flow or a quick release gate, careful consideration is given to the details that increase cow comfort and provide greater farmer satisfaction.



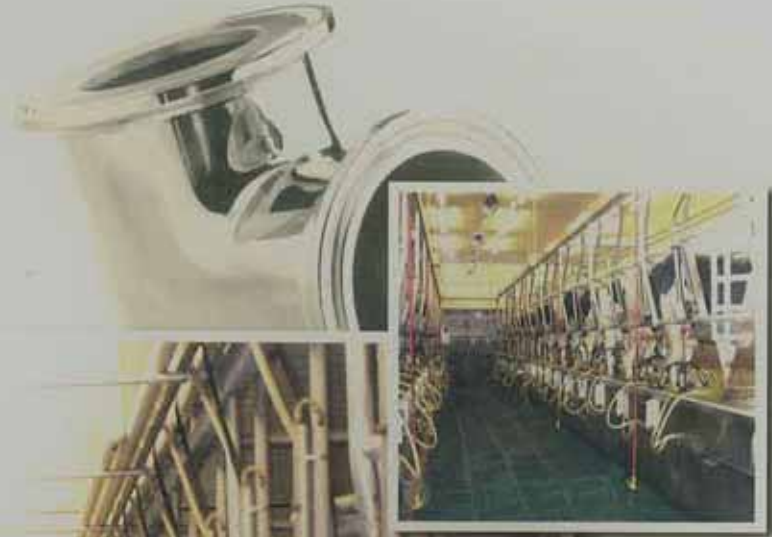
**The well-crafted milking tools of yesterday
have evolved into the exceedingly
technical components of
today's highly computerized
dairy operations...**

...but the primary concerns of every farmer are still the same—the well-being of their cows and the efficiency of their farms.

Westwaard understands that these important aspects of the dairy farm can be enhanced with well-planned and carefully-manufactured components. We maintain a talented in-house fabrication department that is always geared up to provide those unique solutions that aren't available "off the shelf."

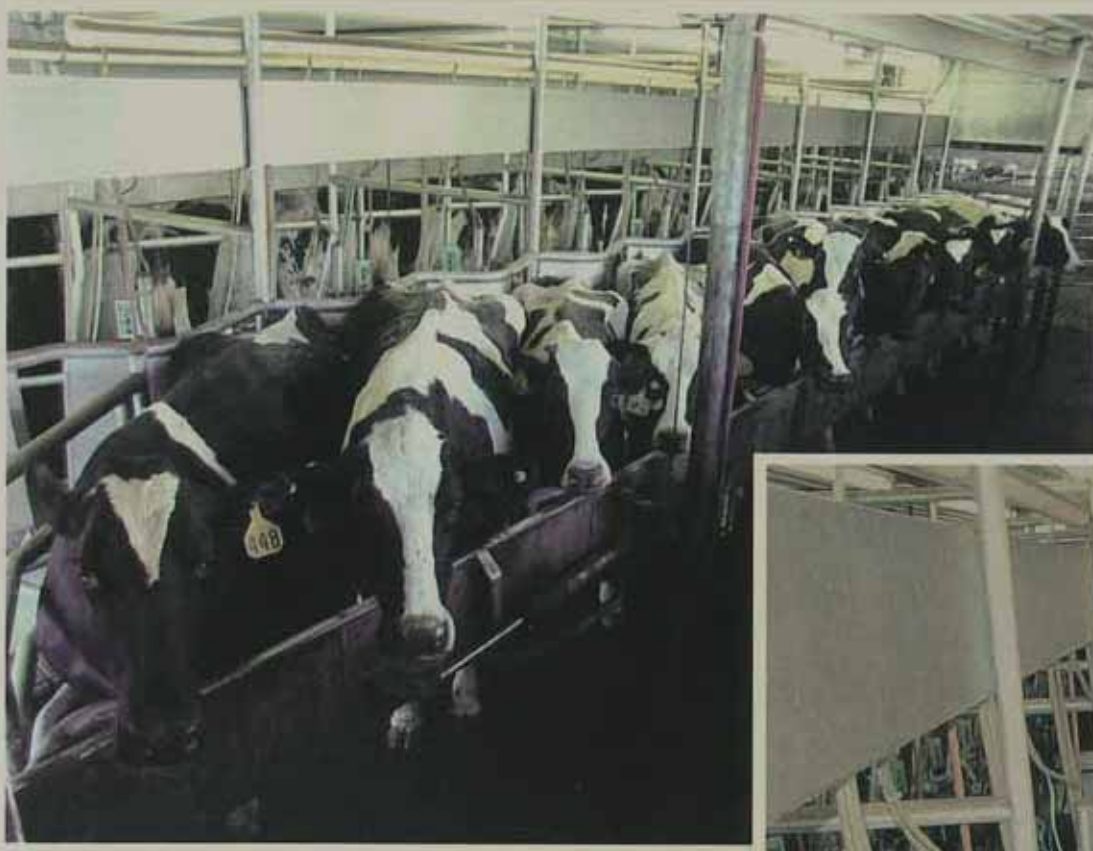


Herringbone Parlor

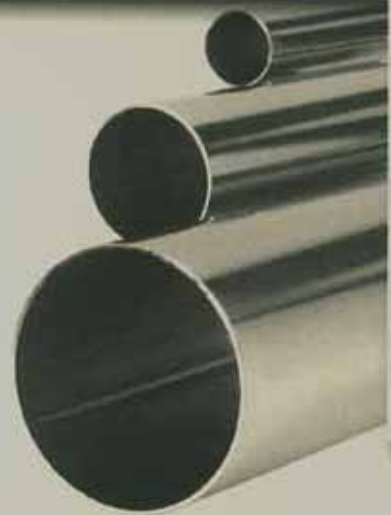
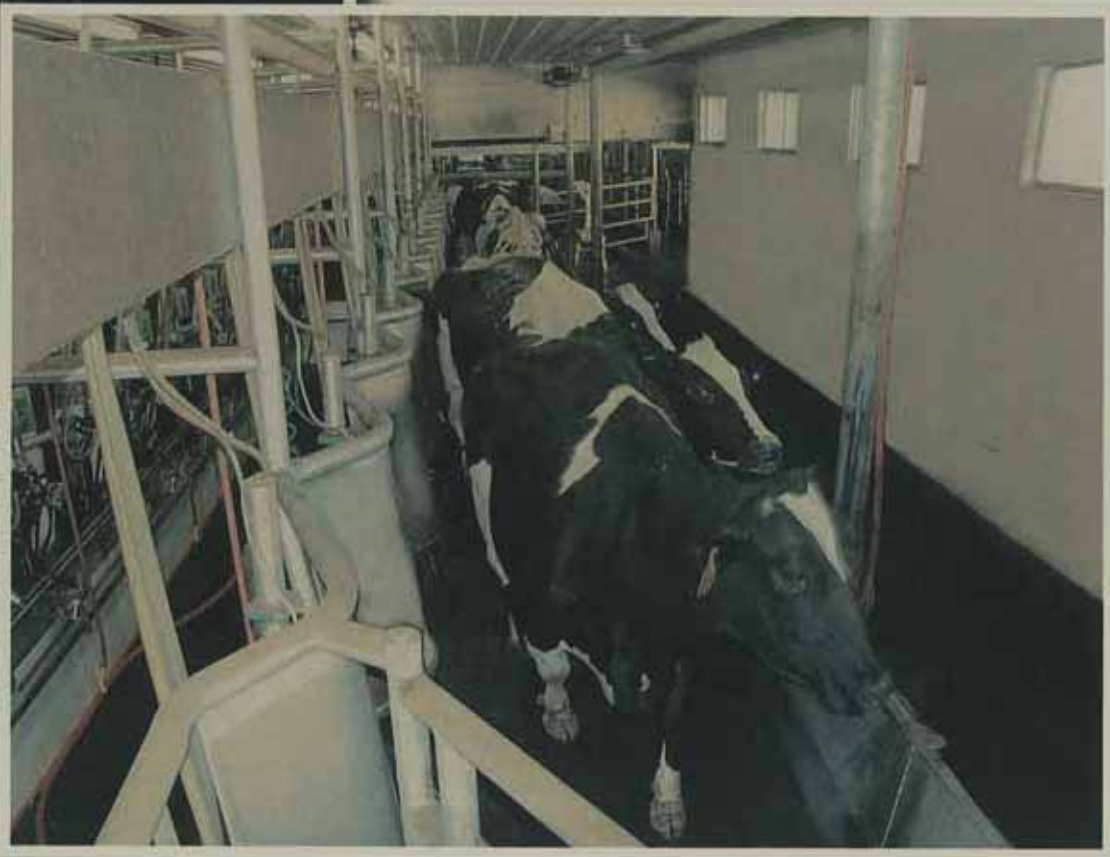


Our attention to detail throughout the manufacturing and assembly process helps ensure the efficiency and integrity of your parlor under the most rigorous use year after year after year.

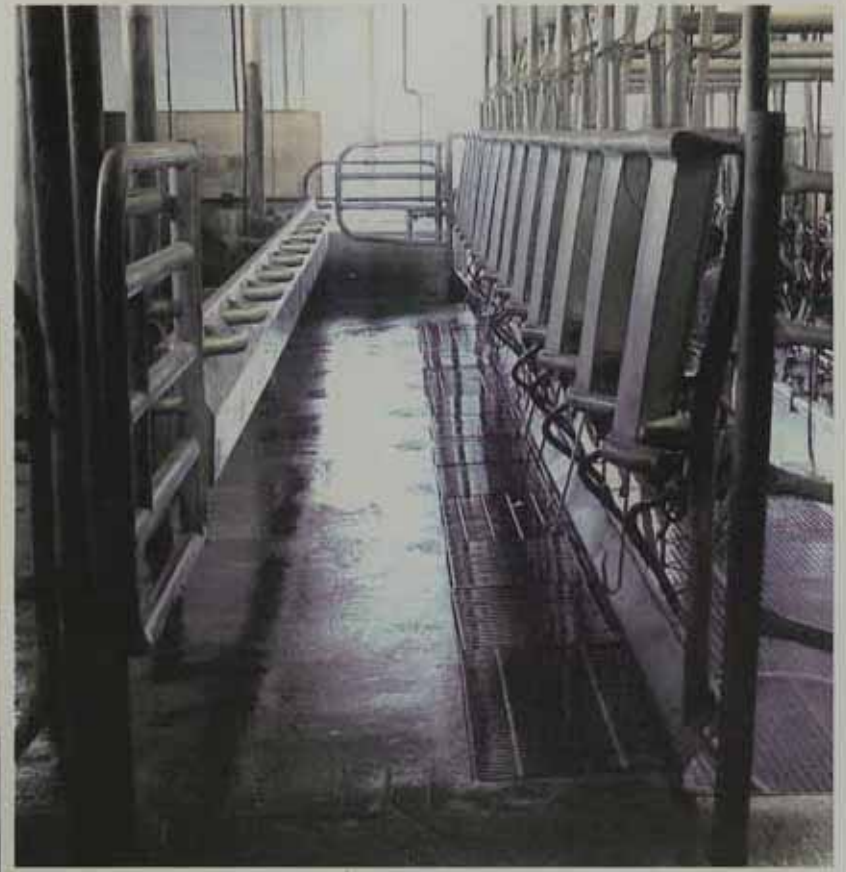
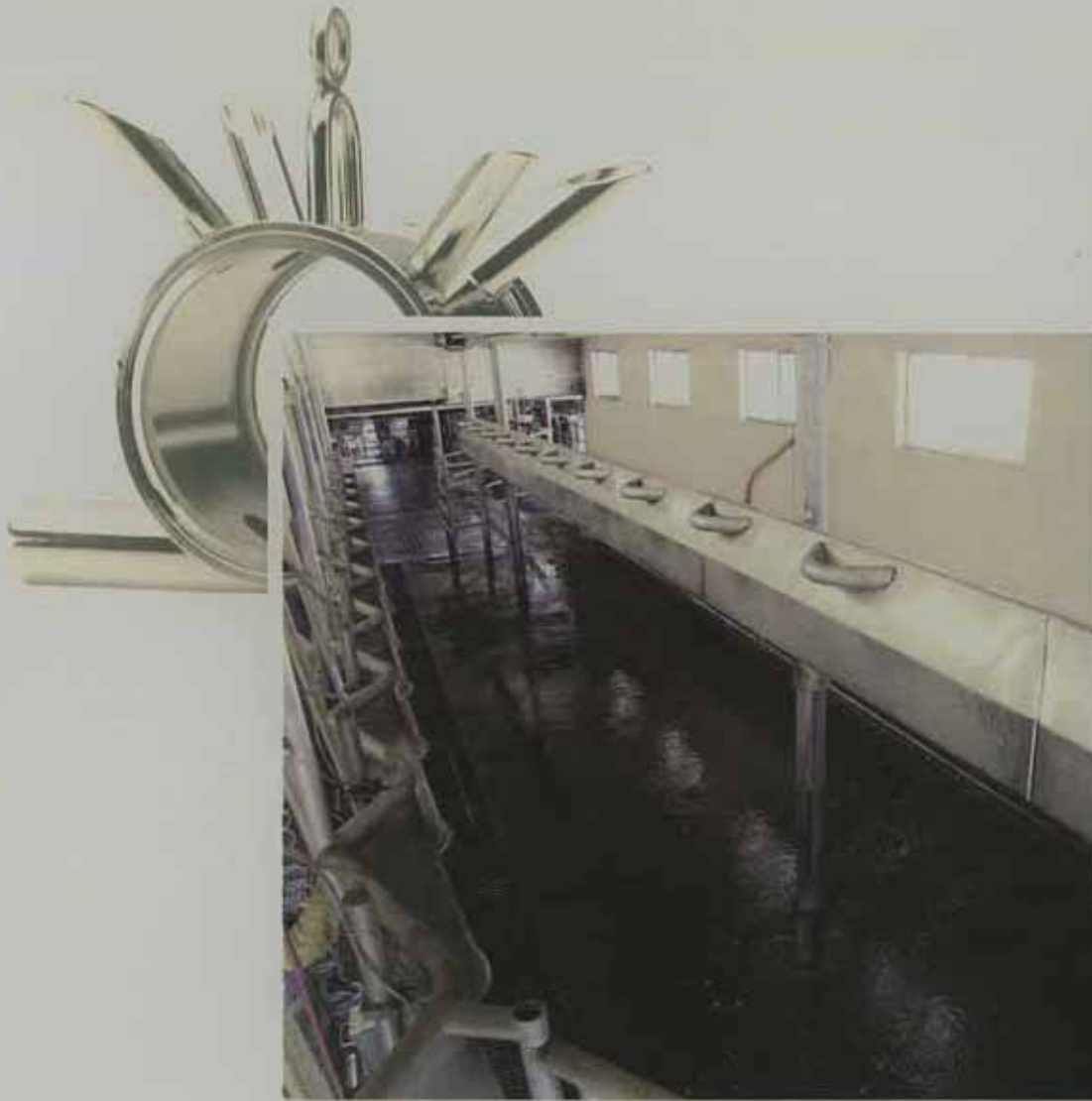
Herringbone Parlor



Unlike many of our competitors, we aren't limited to working with a rigid line of stock components. Since we manufacture every part ourselves, we can easily accommodate larger than normal cows or other unique needs.



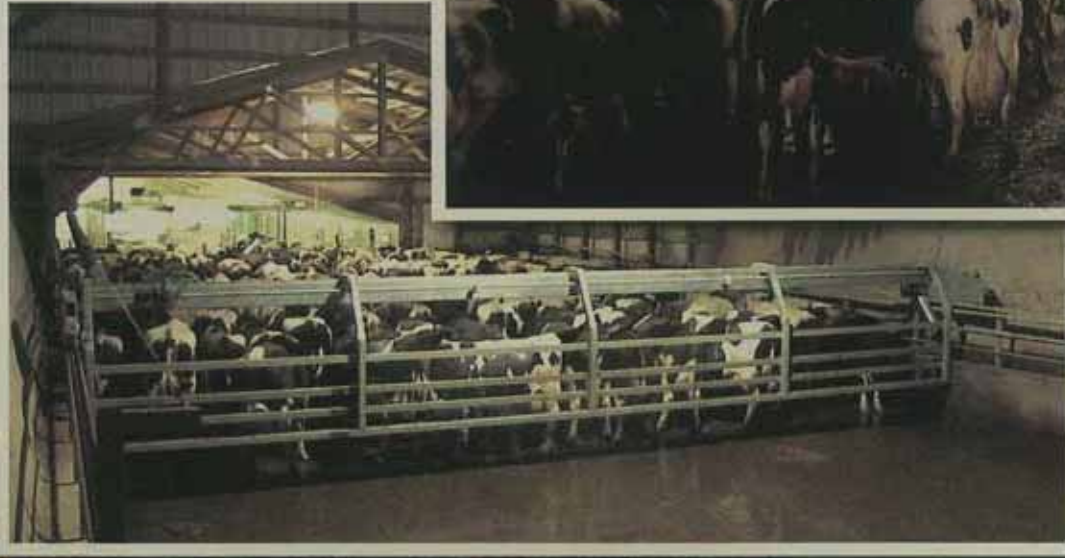
Herringbone Parlor



Our patented front end and "all out" exit allow smoother loading, excellent front definition for cows of all size, reduced exit space requirements and a faster return to load position. Our rear shields are specially sloped for superior cow fit and added convenience and safety for your milkers.



Crowd Gate



Westward's Crowd Control[®] System features the heaviest gate in the industry. Its auto functions reduce milker involvement and expedite quick and comfortable parlor loading. Not only is the holding pen reduced automatically when cows enter the milking facility, but it is also designed to naturally restrict cows from obstructing the smooth forward movement of the herd.





W When automation first came to the farm, our forefathers couldn't imagine that things could get any better—or that they would even need it to be.

But when hundreds of cows turned into thousands of cows in many dairy farms, farmers began to look for ways to increase efficiency in every area of their operation.

Every Westward parlor is designed and built with low operating costs and high productivity in mind. We understand the positive impact that maximizing efficiency in the milking process can have on the profitability of your dairy farm.



Our Great Grandfathers
took tremendous pride in their work.



Expertise and care went into
everything they created. But
fortunately, craftsmanship is not just
a thing of days gone by.
At Westwaard, we may work in stainless steel
instead of wood, but our standards
and excellence are still the same.

Our machinists have been hand
selected for their technical abilities
and attention to detail. They are
never satisfied just to get the job
done on time—they want it done
with perfection. Our crew believes, as you
do, that craftsmanship is only
achieved when care and experience
are combined.

P Parabone Parlor



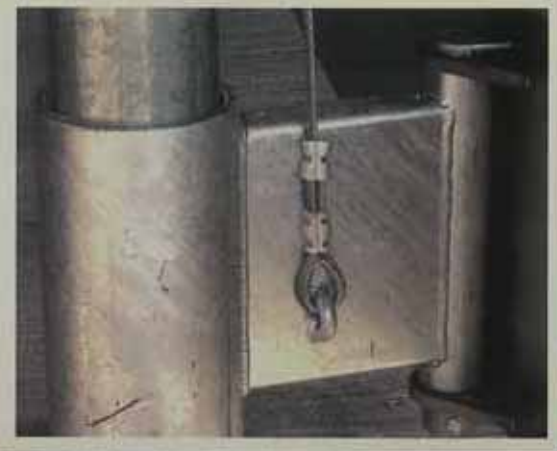
The special butt shield and heavy posts and arches shown in this Heavy Duty 30 stall are just a few examples of why our parlors consistently exceed normal expectations for durability and cow comfort.



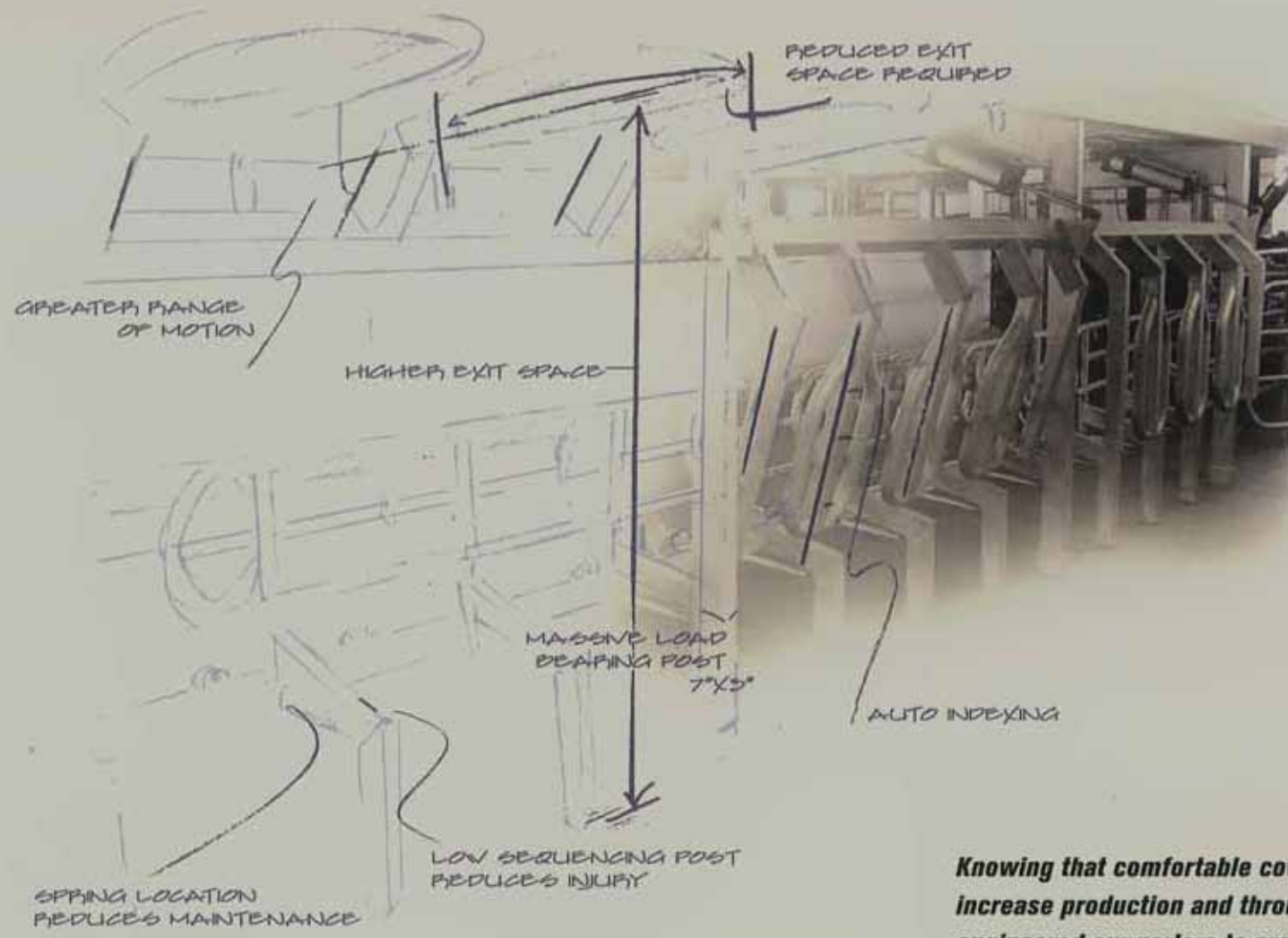
Whether you're building a totally new facility, wanting to make a few modifications, or hoping to remodel in a way that will make your existing space more efficient, we are confident you will find our experience and understanding invaluable.

C Construction

Westward's talented and friendly crews have only one goal: your long-term satisfaction. Our attention to detail and precision workmanship makes installation easy.

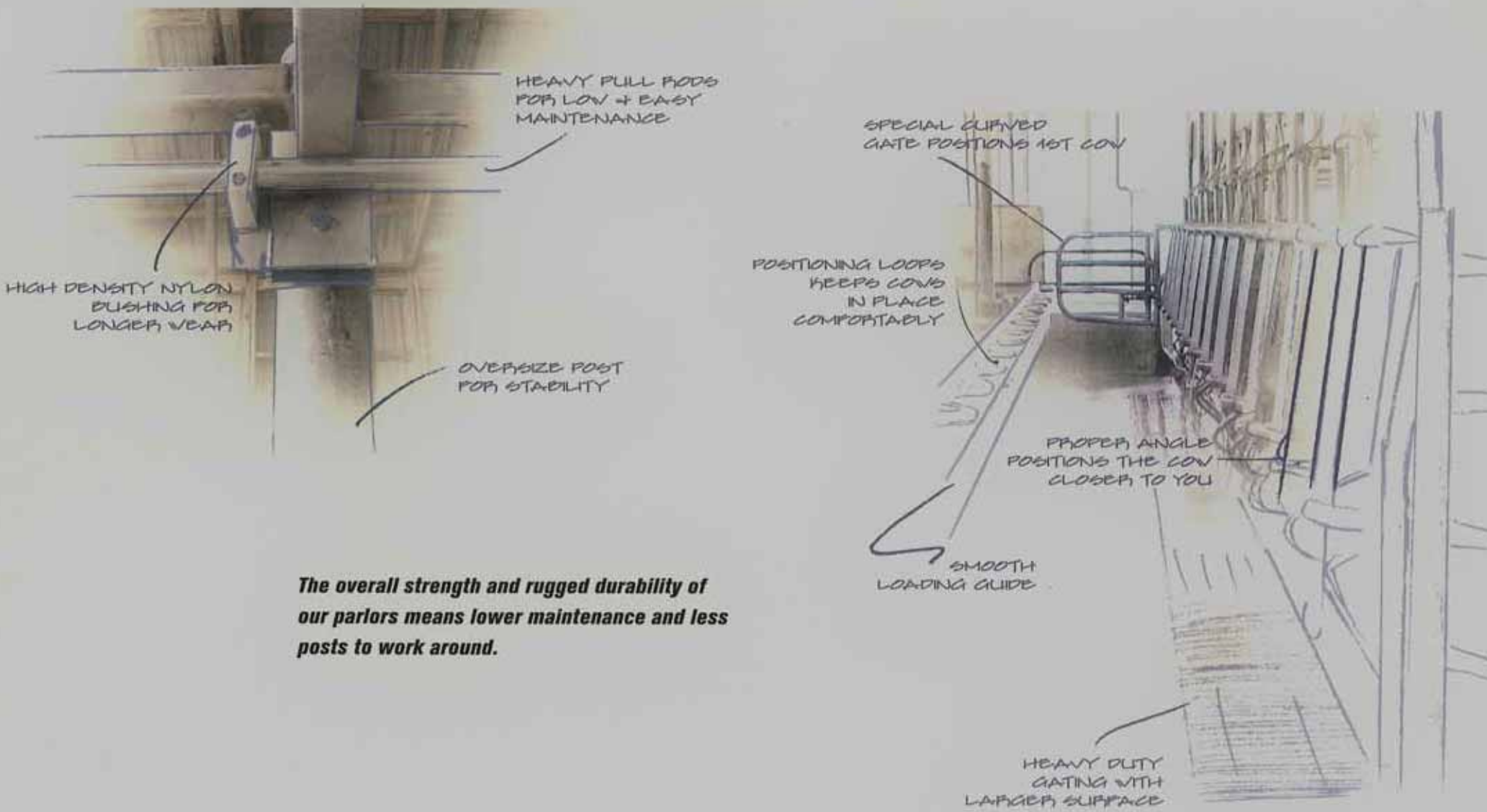


B Behind the Scenes



Knowing that comfortable cows have been shown to increase production and throughput, we have engineered our parlors to provide natural indexing for cow size positioning and comfort.

B Behind the Scenes



The overall strength and rugged durability of our parlors means lower maintenance and less posts to work around.

A Accessories

The large background images shown on each parlor page are part of Westward's extensive line of expertly crafted, highly polished stainless steel dairy accessories.



Backflush Valve
(CA Approved)
Page 15



Air Actuated Milk Hose Support
Page 5



Buna and Teflon Gaskets
Page 15



Herringbone Bottom Unload Claw 5/8" 3/4" 7/8"
Page 11



Custom Air Cylinders
Page 4



Parallel Top Unload Claw 5/8" 3/4"
Page 3



Fold-Down CIP UNIT
Page 3



Air Gate Control Package
Page 6



Triclamp/Weld Milk Line Fittings



Automatic Powdered Soap Dispenser
Page 12



S.S. Milk Line and Miscellaneous S.S. Tubing
Page 10



Automatic Valve
Page 9



Auto Spray System Rotary Parlors

Call 1-800-701-3632
to order a complete catalog of our other products.

The vision and tenacity of the generations before us has set a standard for hard work, excellence and innovation that still permeates much of the dairy industry today.

In keeping with this tradition, Westwaard believes that "good enough" is never good enough.

Our ability to design and manufacture our own components lets us personally ensure the quality of each part and each parlor. Our pieces are built to be durable and functional not only today, but also for years to come. Our goal is to provide every customer with a long-term value for their investment.



