

Flush VALVES

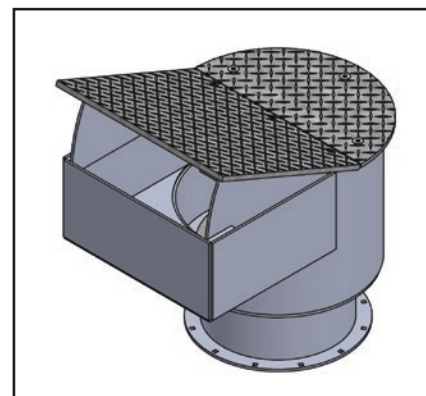
BY DARITECH



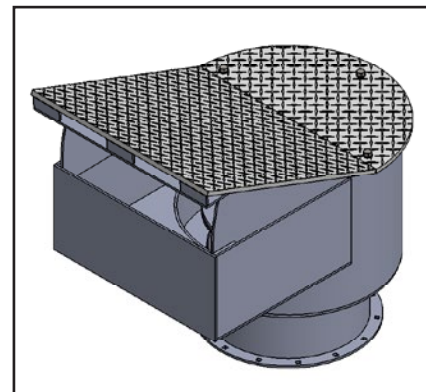
Conventional Flush Valves

Made of hot-dipped galvanized steel featuring a robust and reliable air bag system, stainless steel fasteners and a 3/8" thick lid for 12" models and 1/2" thick lid on 15" models. Easy to maintain and consistent, reliable flow.

Pop-Up Head

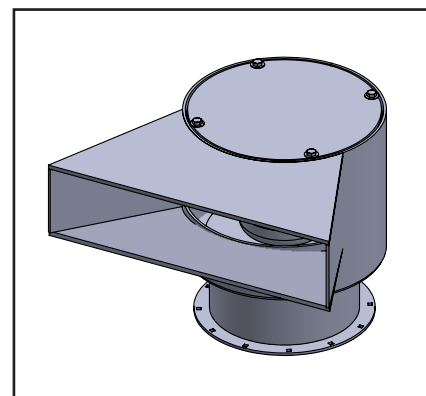


12" Model #V757

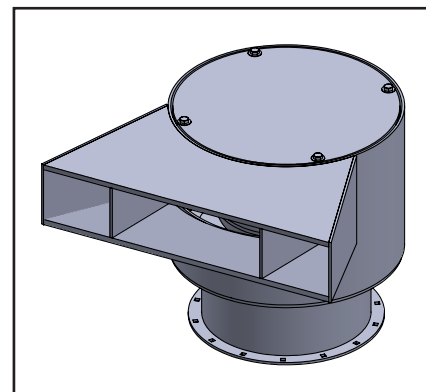


15" Model #X284

Curb Mount



12" Model #L807



15" Model #M274

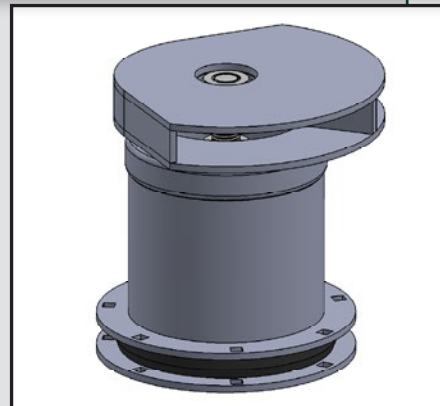
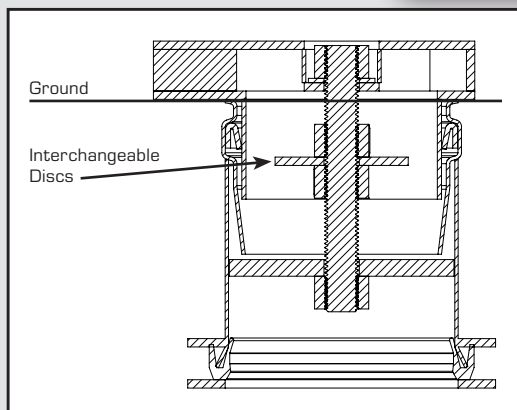
NEW!!!

ROBOT Flush

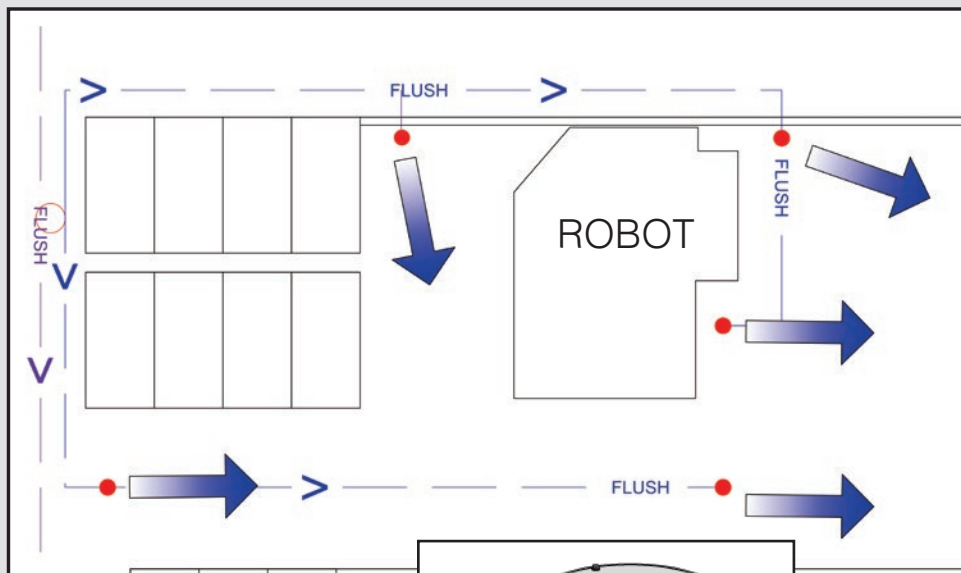
BY DARITECH
PATENT PENDING



Daritech now offers a complete flush system for small areas around robot milking equipment. Each main valve can feed three to eight small flush valves that feature interchangeable discs to precisely control flow and direction. Keep your waiting areas, cross overs, sort and fetch areas consistently clean with reduced labor.



6" Model #M384

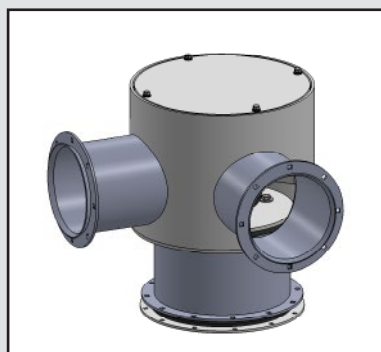


MINI BIOLYNK

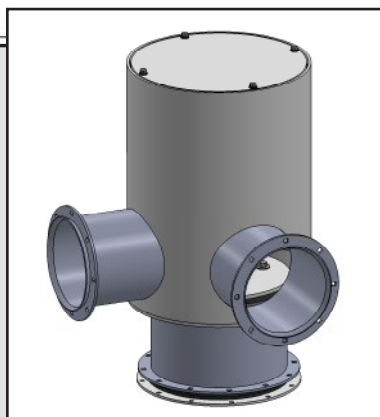
Discover how this system works with a scrape dairy to provide quality flush water! See Daritech's MiniBioLynk brochure for more information.

Left: Typical robot flush system design. Dashed line indicates main feed valve flow, red dots are flush valve heads and spray direction/flow shown with blue arrows.

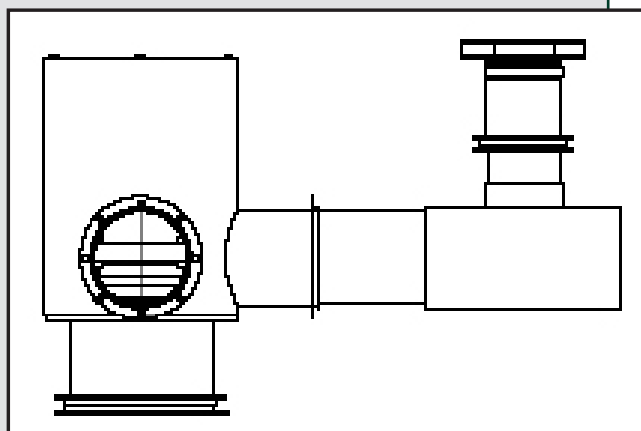
Below: Side profile of a main feed valve and flush valve configuration.



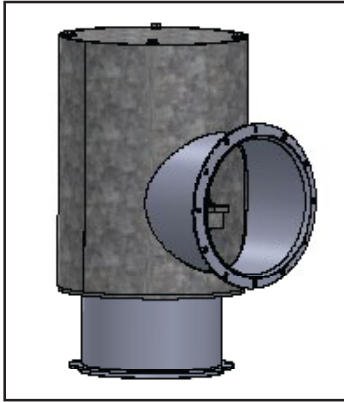
Short Model #Z364
12" In, 2" - 8" Out



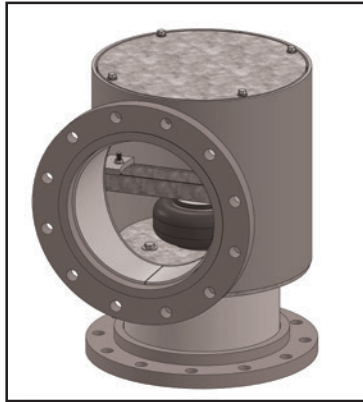
Tall Model #R242
12" In, 8" Out



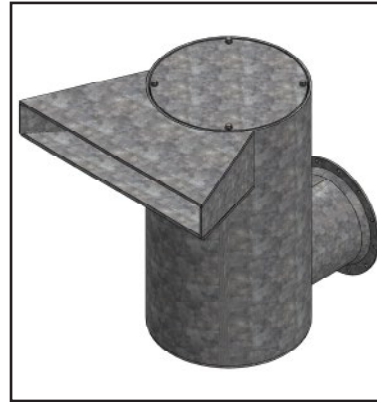
Daritech Specialty Valves



Flume Feed Valves
12" Model #Z584
15" Models available



Above Ground Manifolds
Available in various sizes,
built to suit.

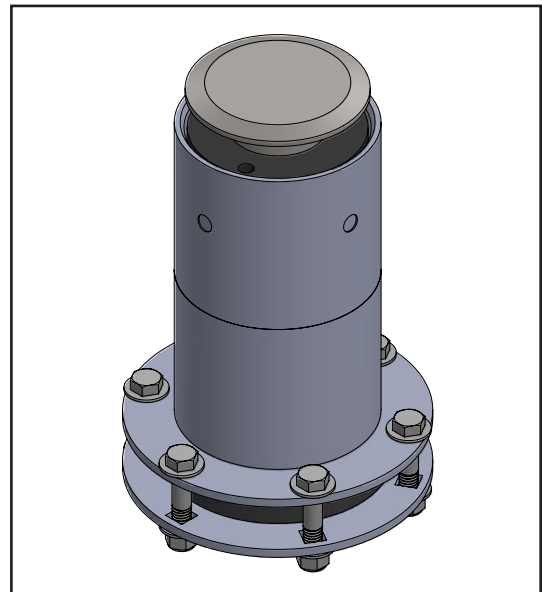
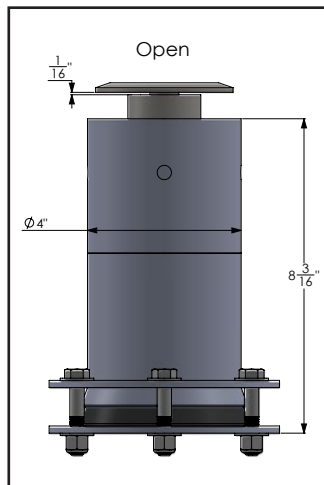
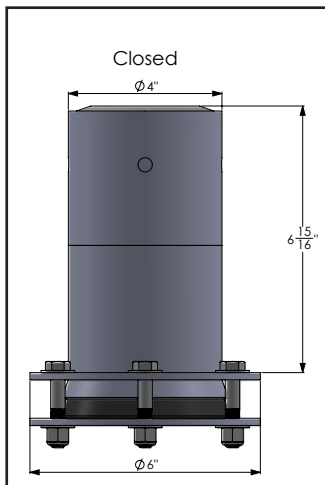


Custom valve configurations
to meet your dairy's needs.



DT Fresh Water Pop-Up Valve

Stainless steel and plastic construction for consistent and reliable performance with 360, 180 or 90 degree spray patterns. Keep your parlor floors clean with easy maintenance for many years of reliable operation.



Mounts to a 3" IPS riser with included compression fitting. Operates at 40 - 70 psi providing 20 - 35 gpm with a 12' spray radius.