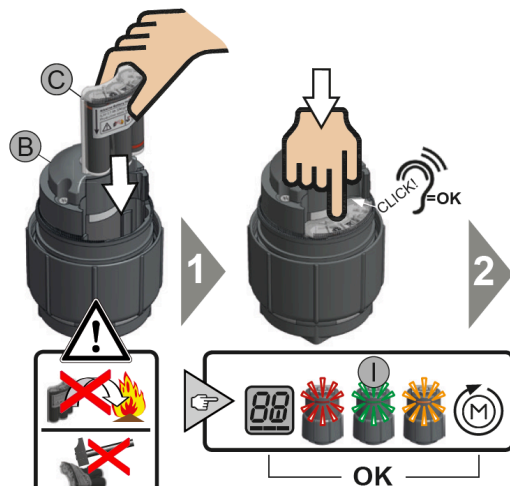
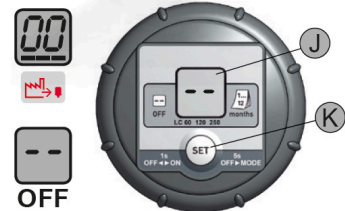


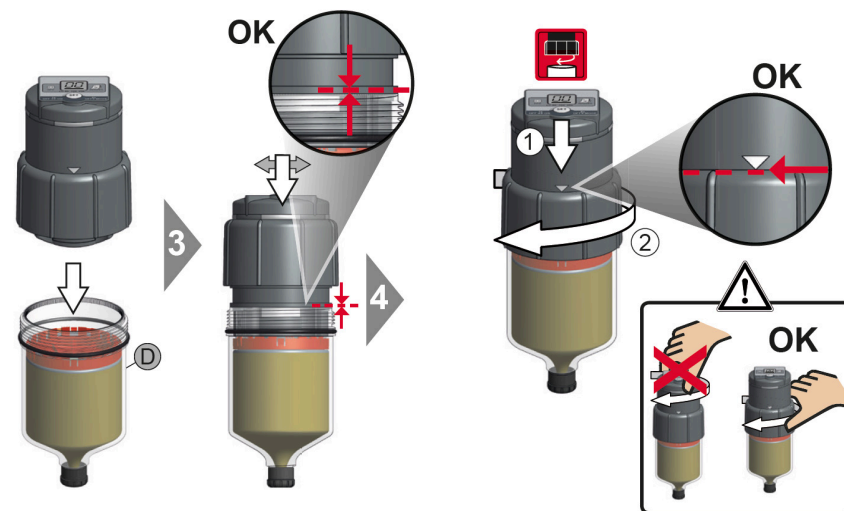
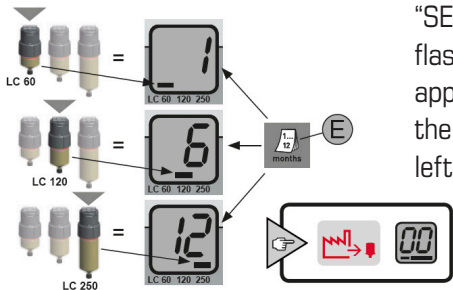
TIMKEN AUTO GREASER USER MANUAL



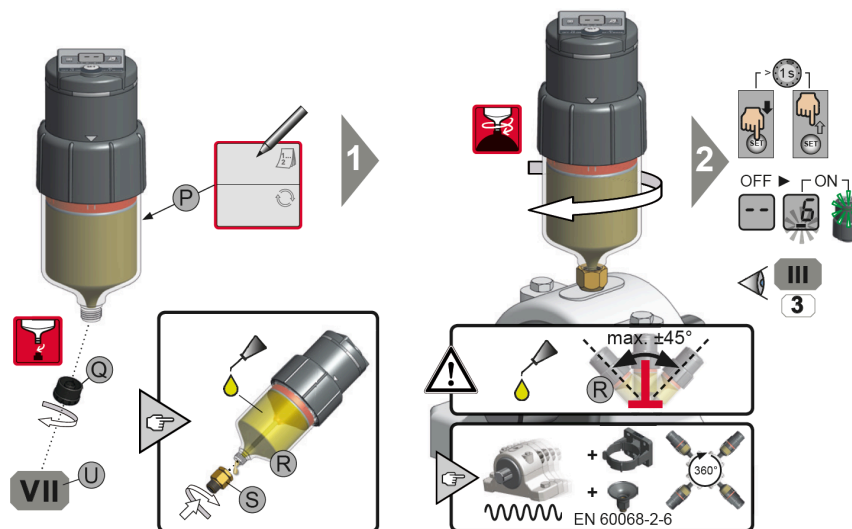
1-2 Remove protective plastic cover and flip control drive upside down to insert battery pack. Ensure pack slide into slots on both sides and listen for the click and drive engagement. If seated properly, red flashing light will turn green and display will read **00**.



SET UP To select cartridge size and replacement interval, hold the "SET" button for 5 seconds until three size bars begin to flash in display. Press "SET" button until horizontal line corresponds with appropriate cartridge size. Release "SET" button until monthly interval digit flashes, then click the "SET" button until the appropriate monthly service interval matches the cartridge size indicated by the chart at left. Once monthly interval and cartridge size is set, unit can be turned off by holding the "SET" button for 1 second and you will see a -- on the display.



3-4 Insert control drive into grease cartridge and ensure gear drive seats onto pivot gear inside cartridge and sits flush as shown in detail rendering above before sliding down collar and screwing onto cartridge. Rotate orange collar until indicator arrows are fully visible.



INSTALL After writing installation date on the cartridge label, screw into grease fitting at no more than a 45 degree angle. Click "SET" button to turn on unit and watch for green flicker light at the top of the unit. When empty or in the event of a low battery, unit will flicker red. Reinstall clear protective cover.

