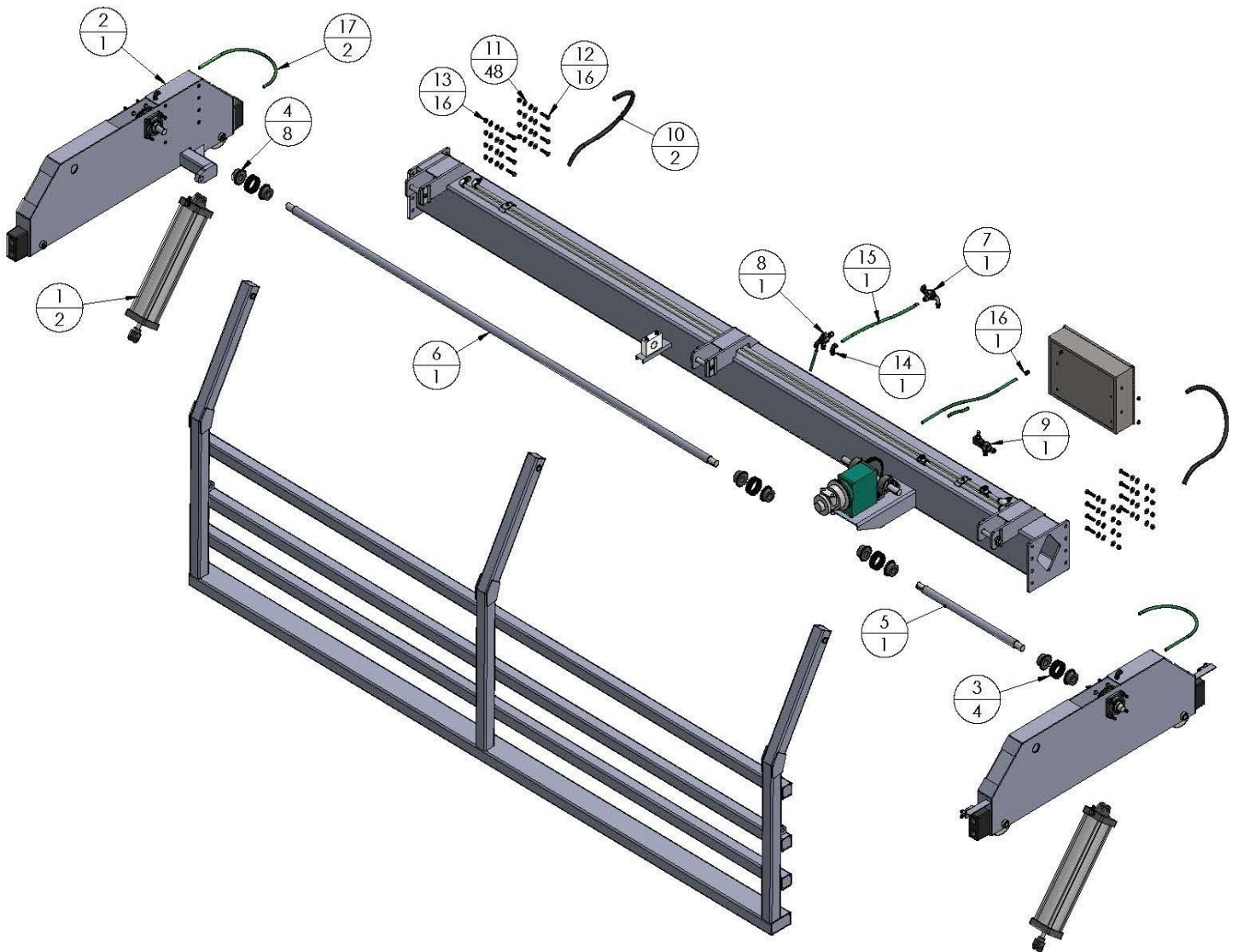


Crowd Gate – Parts Manual

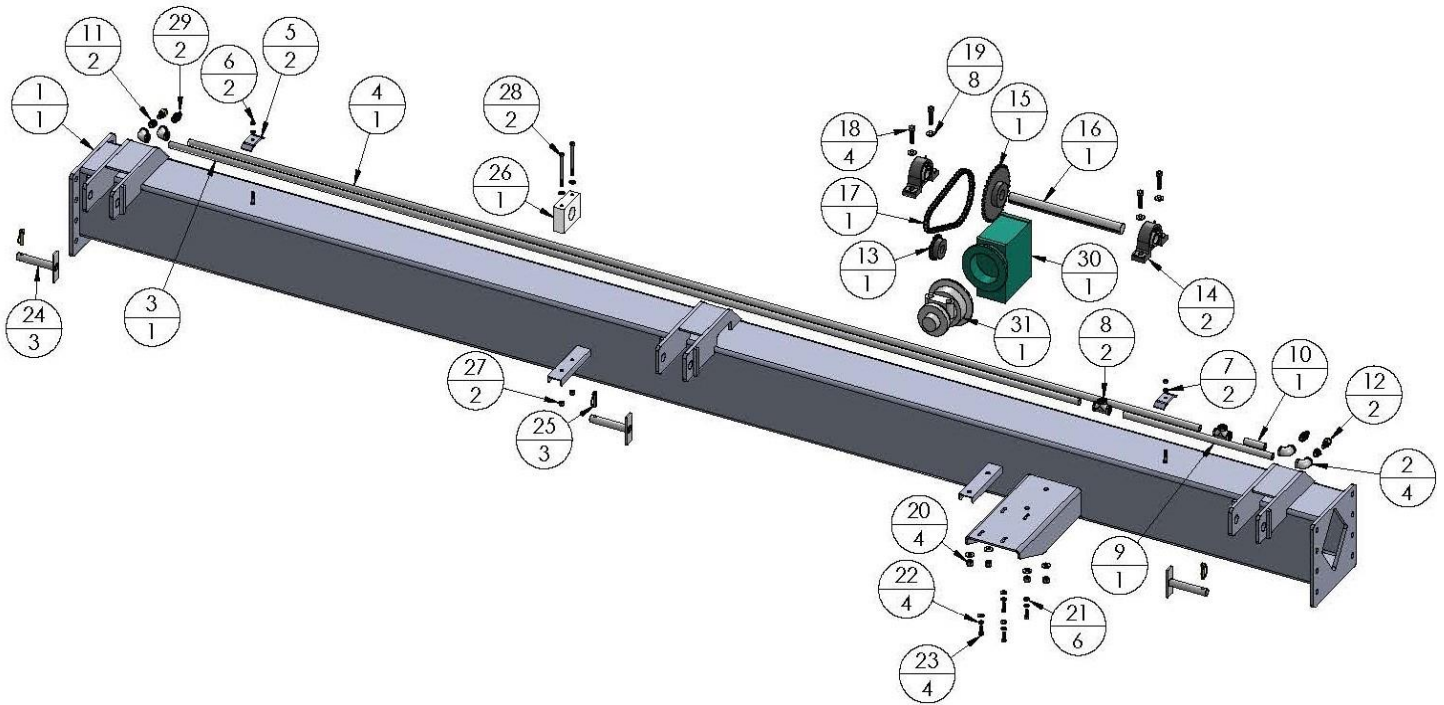
Revision #	Description	Date
Rev. 1	Manual Completion	7-10-2020
Rev. 1.1	Carriage Model Update	12-4-2023

Crowd Gate Overall ASM



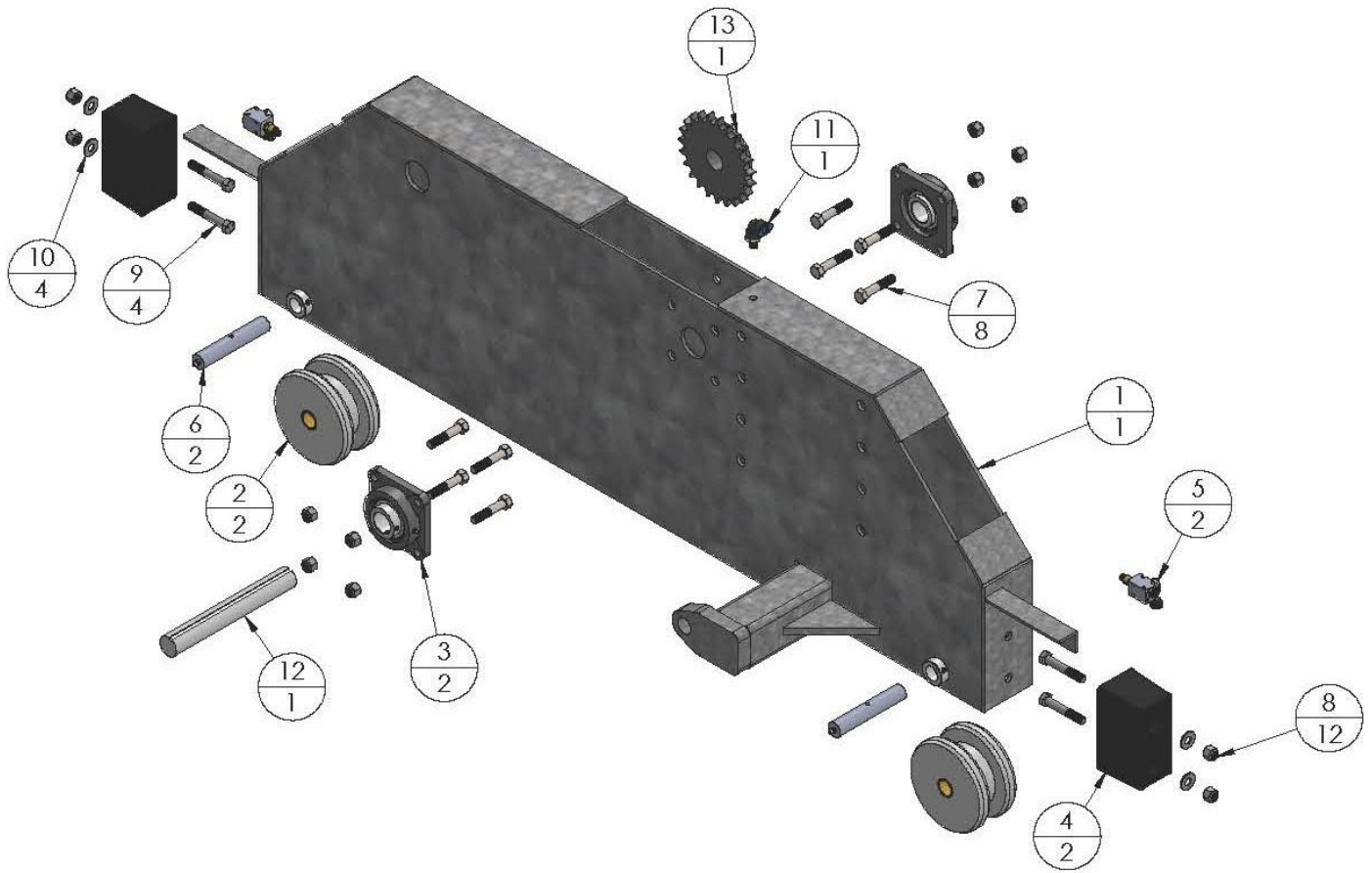
Label #	Part #	Description
1	X213	6" X 21" Crowd Gate Cylinder (Over 40' or HL)
	A475	5" X 22" Standard Crowd Gate Cylinder
	G662	8" X 21" Crowd Gate Cylinder
2	----	Crowd Gate Carriage Full ASM
3	E407	1-3/8" Chain Loop
4	P632	5016 X 1-3/8" Hub Chain Coup.
5	----	Job Specific- Stub Keyway Drive Shaft- Short
6	----	Job Specific – Stub Keyway Drive Shaft- Long
7	----	Oil Pipe Exh ASM
8	----	Air Motor Exh ASM
9	----	Air Cylinder Pipe in ASM
10	Y300	1/2" Lola Push Lock Hose
11	S627	1/2" Zinc F/W USS
12	G214	1/2"- 13 X 2" Zinc Hex Bolt
13	L524	1/2" – 13 Zinc Nylock Nut
14	U688	1/2" X 1/2" PTC 90
15	X245	1/2" Nylon Air Tubing Green Dot
16	C101	1/2" X 5/8" Rubber Grommet
17	X245	1/2" Nylon Air Tubing Green Dot

Main Beam ASM



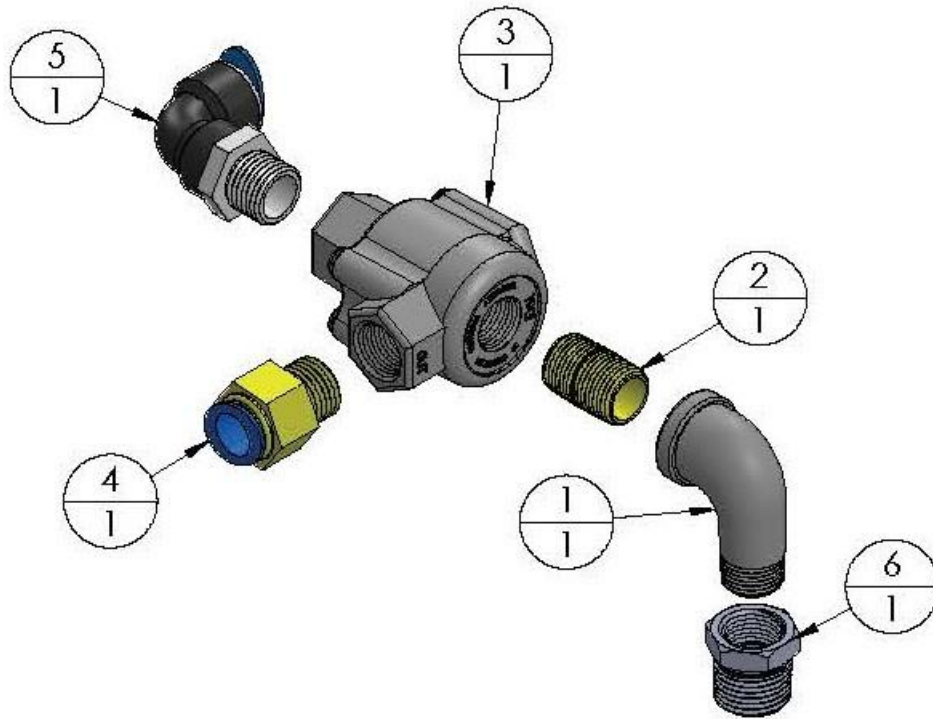
Label #	Part #	Description
1	----	Main Beam Frame
2	L156	1/2" Galv. 90
3	B475	1/2" Galv. T/C Pipe
4	B475	1/2" Galv. T/C Pipe
5	----	Beam Pipe Clamp
6	M447	5/16" – 18 Zinc Nylock Nut
7	U209	5/16" Zinc F/W USS
8	B614	1/2" Galv. Tee
9	B475	1/2" Galv. T/C Pipe
10	B475	1/2" Galv. T/C Pipe
11	F360	1/2" X 1/4" Galv. Bushing
12	G509	1/2" X 1/4" PTC Straight
13	D636	Finished Bore Sprocket
14	X111	2 Bolt Pillow Block 1-3/8" Crowd Gate Bearing
15	G143	Finished Bore Sprocket
16	---	16-1/2" X 1-3/8" Dia Keyway Shaft
17	K752	#50 RIV Chain ft
18	G214	1/2" – 13 X 2" Zinc Hex Bolt
19	S627	1/2" Zinc F/W USS
20	L524	1/2" – 13 Zinc Nylock Nut
21	D151	3/8" Zinc F/W USS
22	K203	3/8" Zinc L/W
23	A274	3/8"- 16 X 1" Zinc Hex Bolt
24	----	Crowd Gate Hinge Pin
25	P196	3/8" Linch Pin
26	O268	Vertical Lift timing Shaft Bearing Block (UHMW)
27	L709	3/8" – 16 Zinc Nylock Nut
28	Q438	3/8" X 4-1/2" Zinc Bolt
29	X129	Left Hand Gear Box- Crowd Gate
30	E839	Gast. Air Motor

Carriage ASM



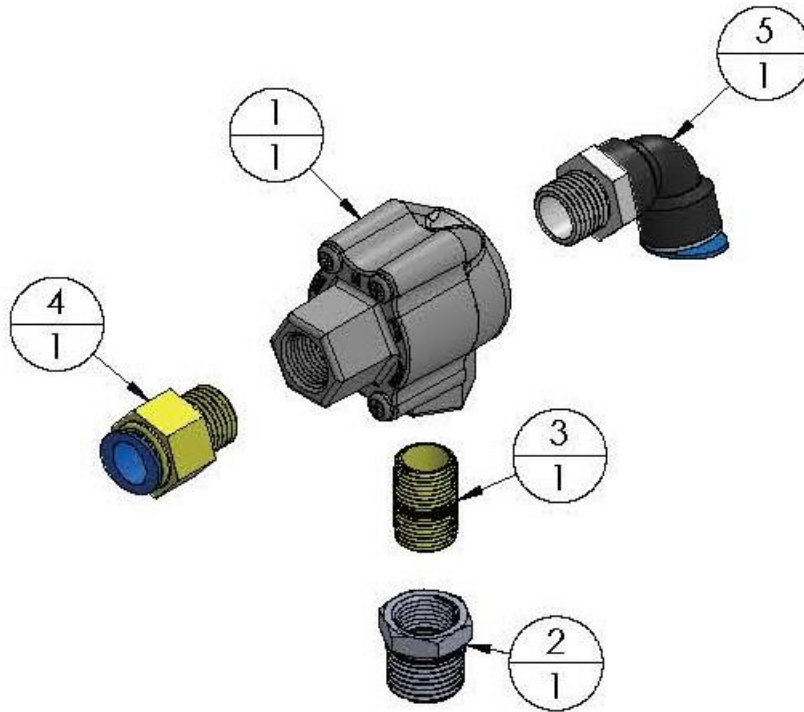
Label #	Part #	Description
1	----	Full Carriage ASM
2	R526	6" Crowd Gate Wheel
3	T458	4 Bolt Flange 1-3/8" Crowd Gate Carriage Bearing
4	J297	Rubber Bumper
5	W880	Crowd Gate Cam Operator Valve Assembly (T656,B356,G201)
6	F246	Crowd Gate Axle Pin
7	G214	1/2" - 13 X 2" Zinc Hex Bolt
8	L524	1/2" - 13 Zinc Nylock Nut
9	Z350	1/2" - 13 X 3" Zinc Hex Bolt
10	S627	1/2" Zinc F/W USS
11	M761	1/2" X 1/4" PTC 90
12	----	10" X 1-3/8" Dia Keyway Shaft
13	D650	Finished Bore Sprocket

Oil Pipe Exh ASM



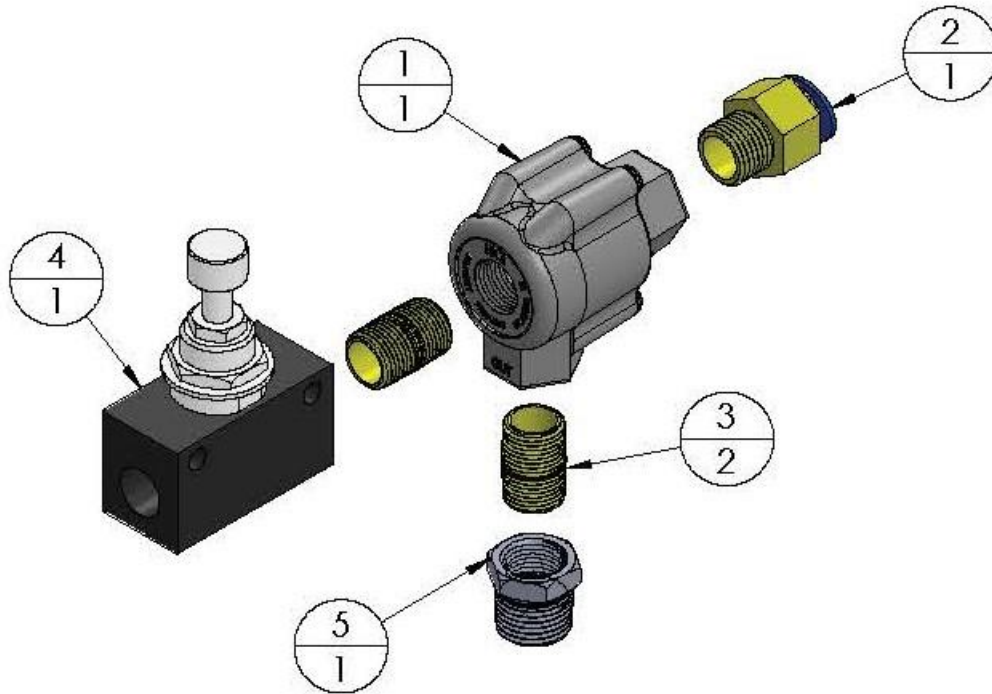
Label #	Part #	Description
1	P181	3/8" Galv. St 90
2	Q219	3/8" X CL Galv. Nipple
3	F401	Humphrey Exhaust Valve
4	J736	1/2" X 3/8" PTC Straight
5	Q579	1/2" X 3/8" PTC 90
6	U322	1/2" X 3/8" Galv. Bushing

Air Motor Exh ASM



Label #	Part #	Description
1	F401	Humphrey Exhaust Valve
2	U322	1/2" X 3/8" Galv. Bushing
3	Q219	3/8" X CL Galv. Nipple
4	J736	1/2" X 3/8" PTC Straight
5	Q579	1/2" X 3/8" PTC 90

Air Cylinder Pipe In ASM



Label #	Part #	Description
1	F401	Humphrey Exhaust Valve
2	J736	1/2" X 3/8" PTC Straight
3	Q219	3/8" X CL Galv. Nipple
4	D444	Norgren Flow Control
5	U322	1/2" X 3/8" Galv. Bushing

For Technical Support, to order Replacement Parts, or for questions about other products, please contact your local dealer.
