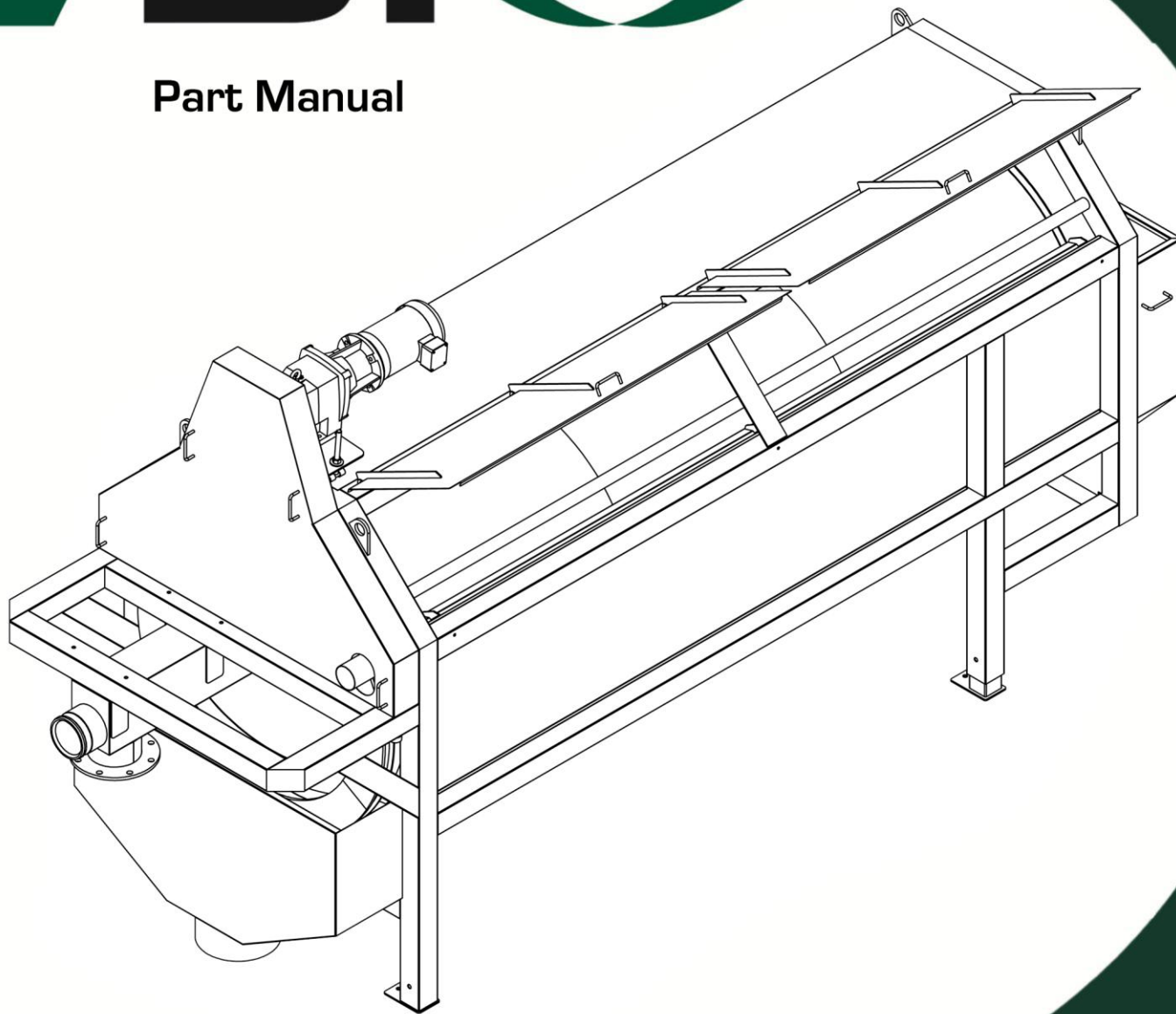




**DARITECH**<sup>INC</sup>  
Manure Management

# DT <sup>by</sup> DARITECH 360

**Part Manual**

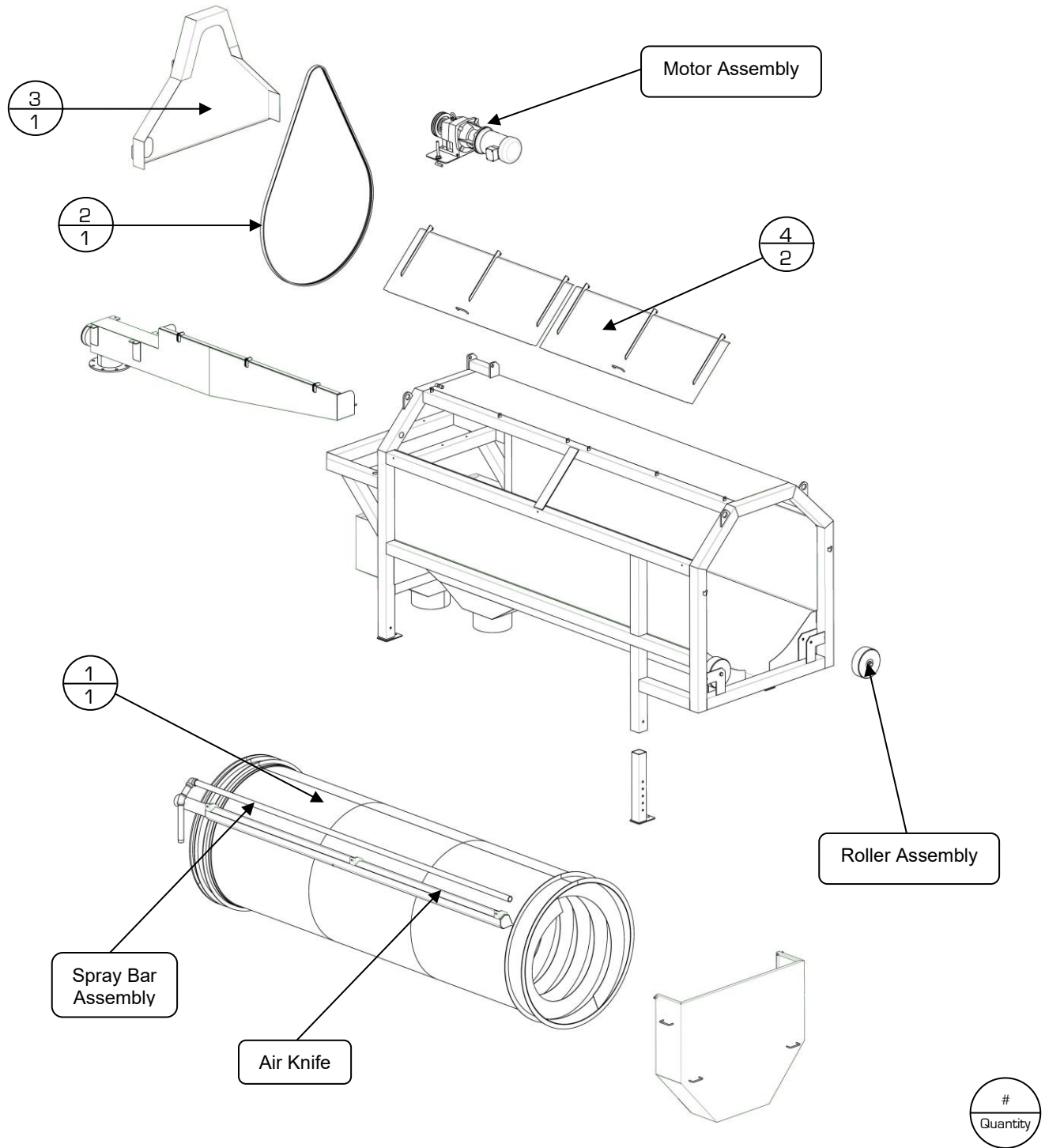


For Model:

**DT-360 (48")  
Separator**

Revision	Date	Description
3.2	4/27/2026	Spray Bar Nozzle Update

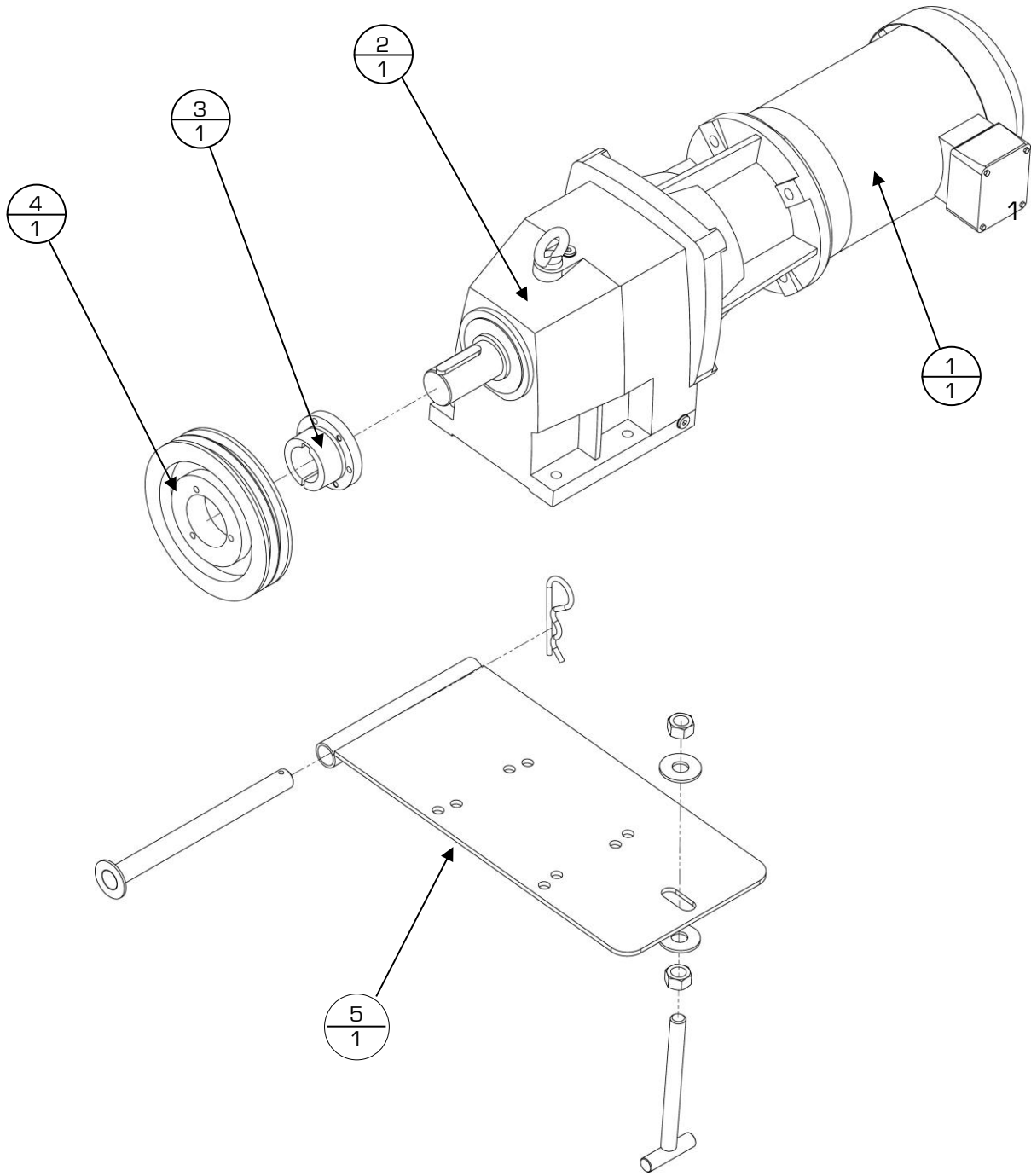
## Components



Item #	Part #	Description
1	P134	48" DT360 - Punch Screen Only (specific screen size upon order)
	V359	48" DT360 - Mesh / Hybrid Screen Only (specific mesh size upon order)
2	W168	Banded 3B195 Powerband Belt
3	—	Belt Guard, Right hand machine
4	—	Lid Assembly

\*Items not listed are considered non-common replacement parts and can be custom ordered upon request.

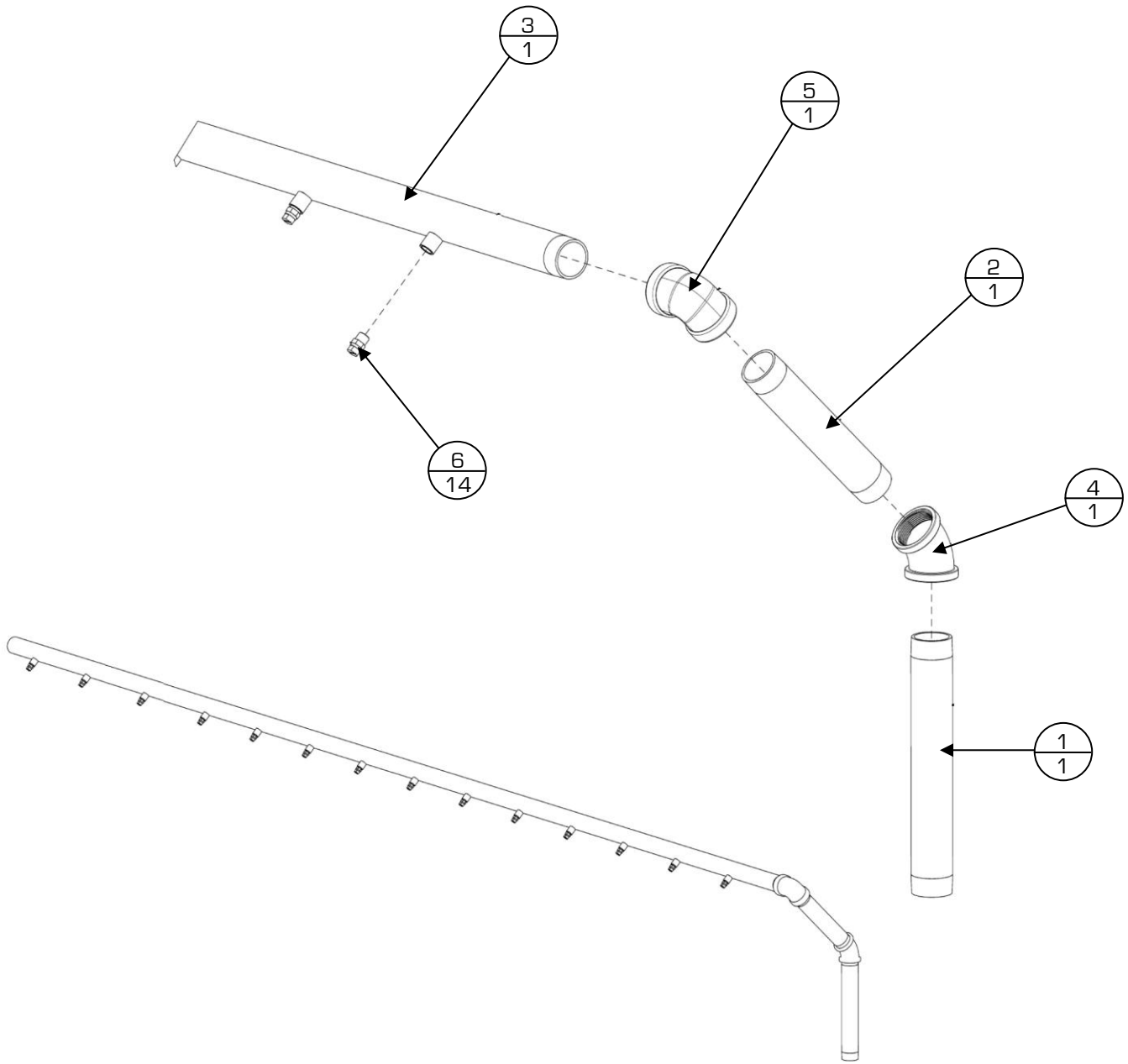
# Motor Assembly



Item #	Part #	Description	# Quantity
0	O187	Nord Gearbox - 3 HP w/Motor, 3PH. 24.41:1 (48" DT360)	
1	F249	Nord Motor 3 HP 182TC 3 PH 50/60	
2	F486	Nord Gearbox Only 3 HP 24.41:1 (48" DT360)	
3	Y145	QD Bushing, SK 1-7/8"	
4	V190	3 B Groove 8.0 SK Sheave	
5	Z386	DT360 Motor Mount / Nord Reducer	

\*Items not listed are considered non-common replacement parts and can be custom ordered upon request.

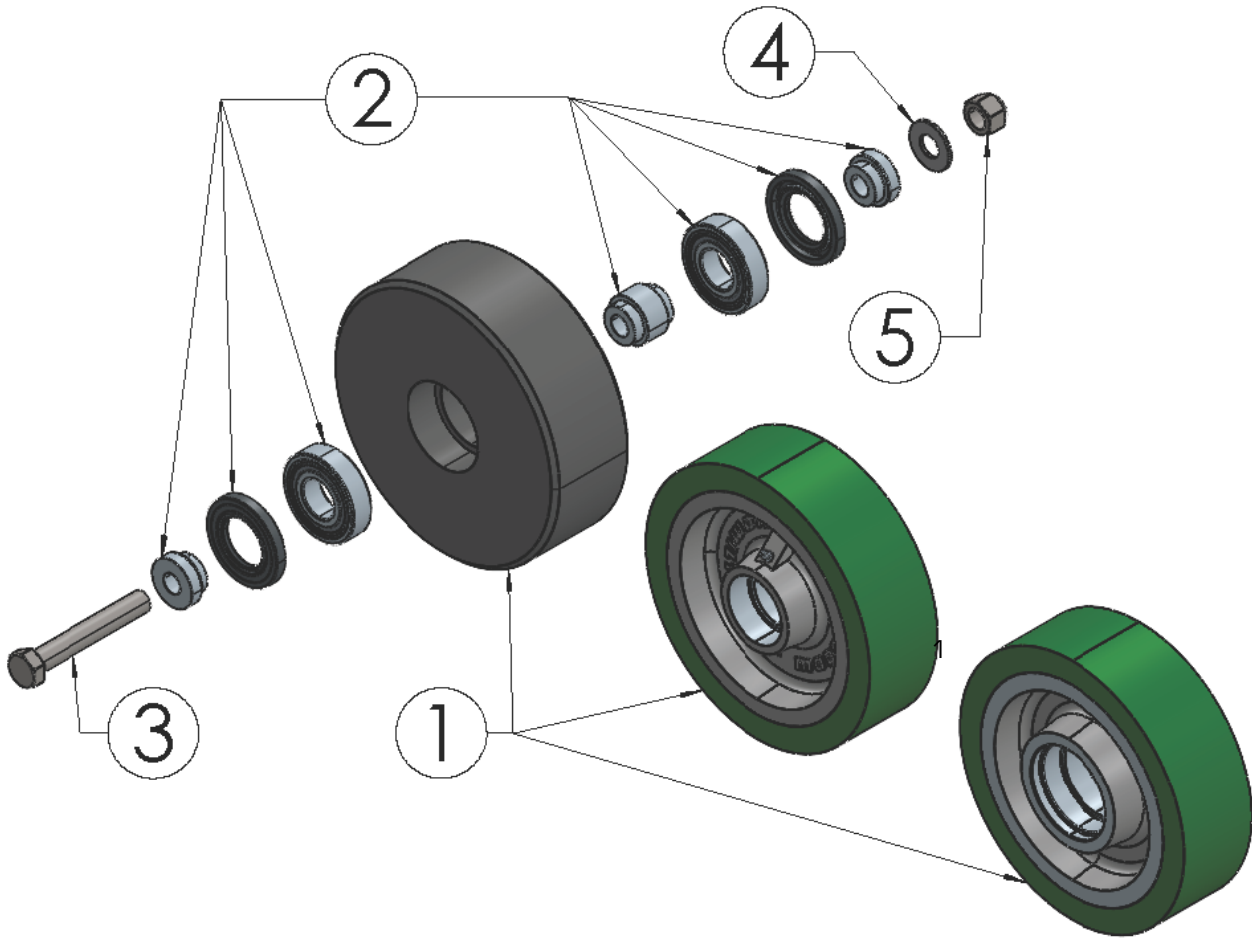
## Spray Bar Assembly



Item #	Part #	Description
1	—	1-1/2" Pipe 1
2	—	1-1/2" Pipe 1
3	—	1-1/2" Spray Pipe 12 Port
4	G566	1-1/2" 150# SS 45 Elbow Threaded
5	L393	1-1/2" 150# SS 90 Elbow Threaded
6	R455	DT360 1/4" SS Spray Nozzle 9510

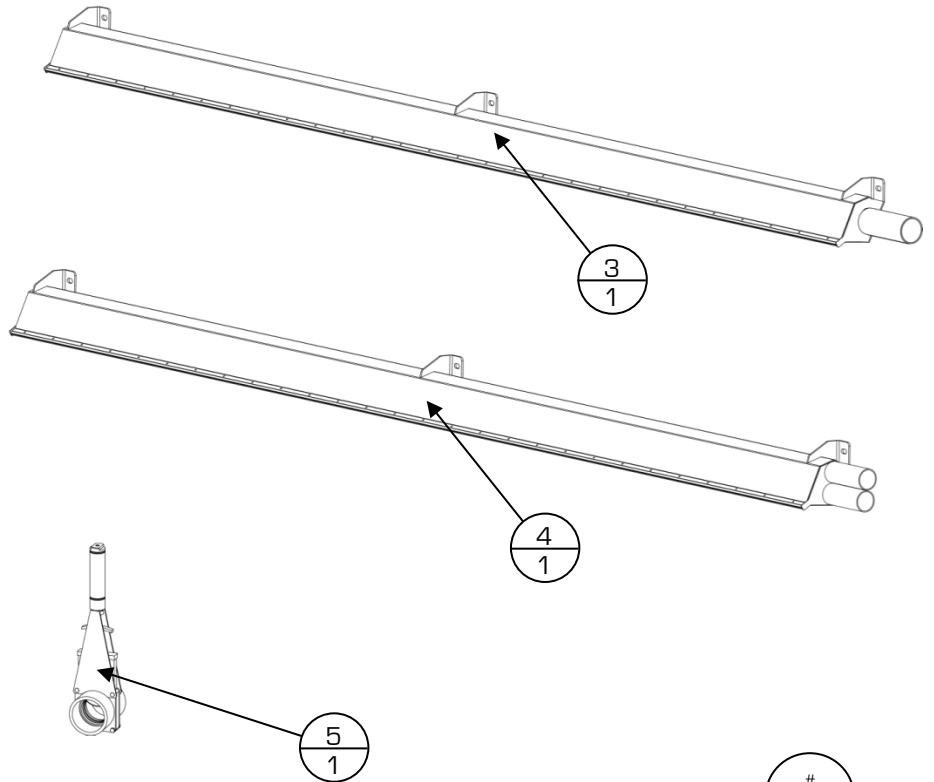
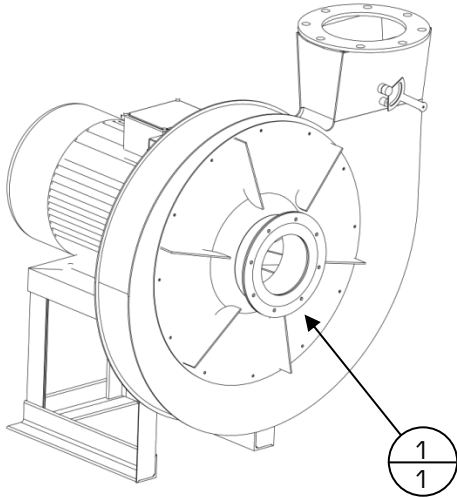
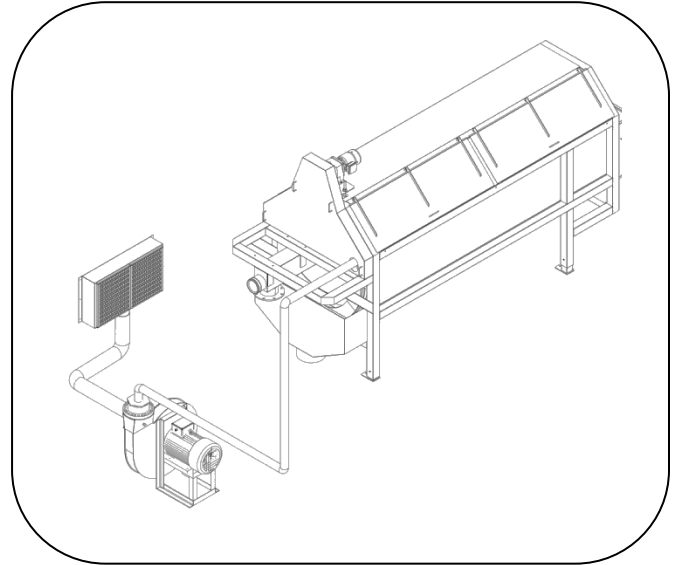
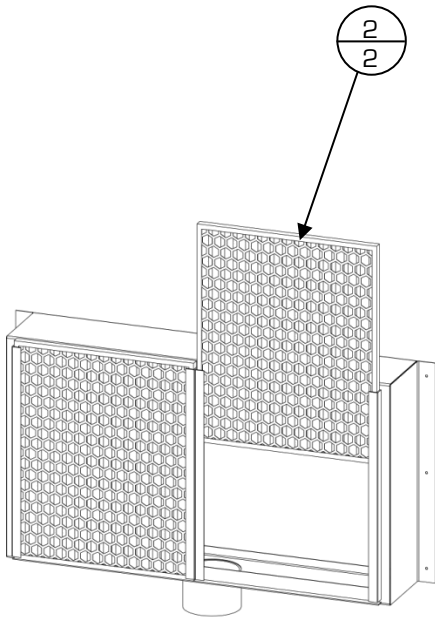
\*Items not listed are considered non-common replacement parts and can be custom ordered upon request.

## Roller Assembly



Item #	Part #	Description
1	L505	48" DT360 Wheel Complete - Nylon Solid ( <b>Discontinued</b> )
	Q173	48" DT360 Wheel Complete - Polyurethane on Cast Steel ( <b>Discontinued</b> )
	Q173	48" DT360 Wheel Complete - Polyurethane on SS
2	C201	48" DT360 Wheel Internal Bearing/Seal/Shaft Kit - Nylon Wheel
	E481	48" DT360 Wheel Internal Bearing/Seal/Shaft Assy. - Polyurethane on Steel
	P220	48" DT360 Urethane Wheel Kit (Machine Parts, Bearing, Seals) (Ver 2 SS Core, 6307 Bearing)
3	M339	3/4" X 5-1/2" SS Hex Bolt
4	O839	3/4" SS Flat Washer
5	C572	3/4" SS Nylock Nut

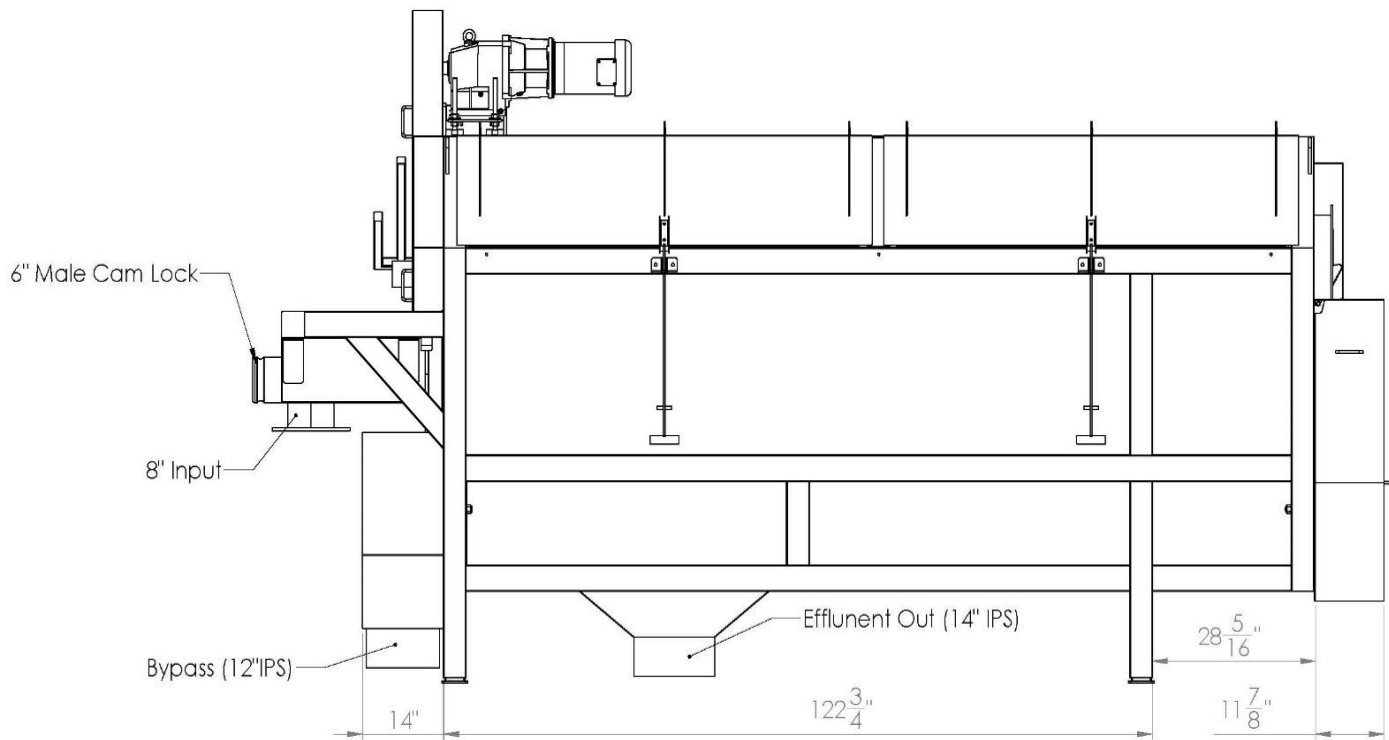
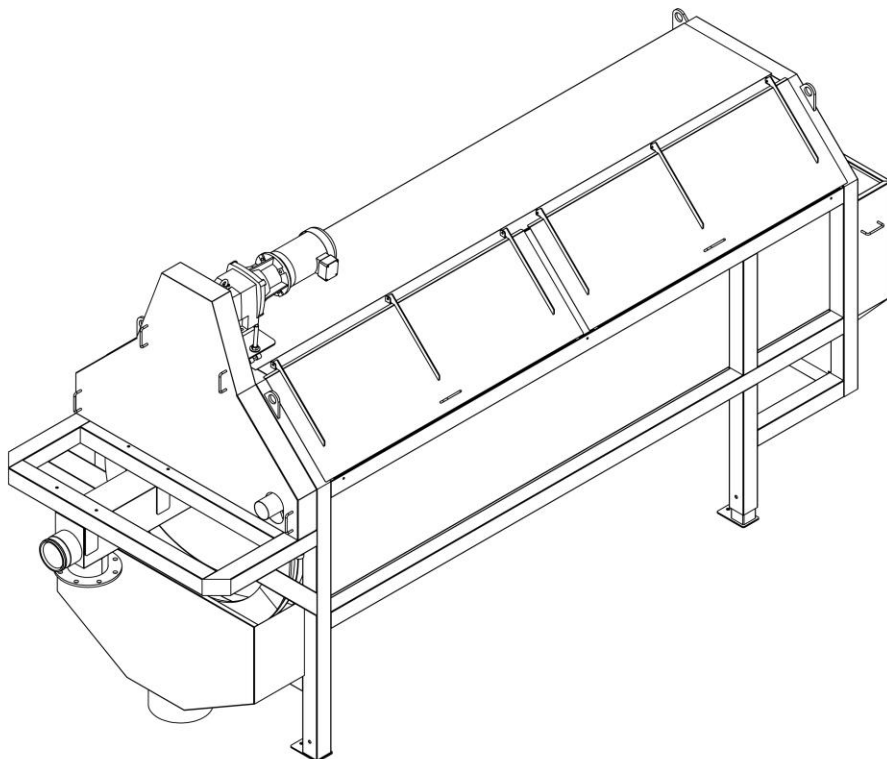
### Air Knife Attachment (Optional)



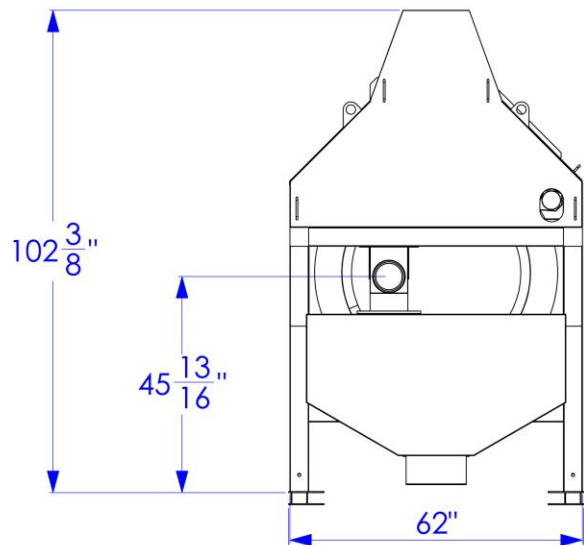
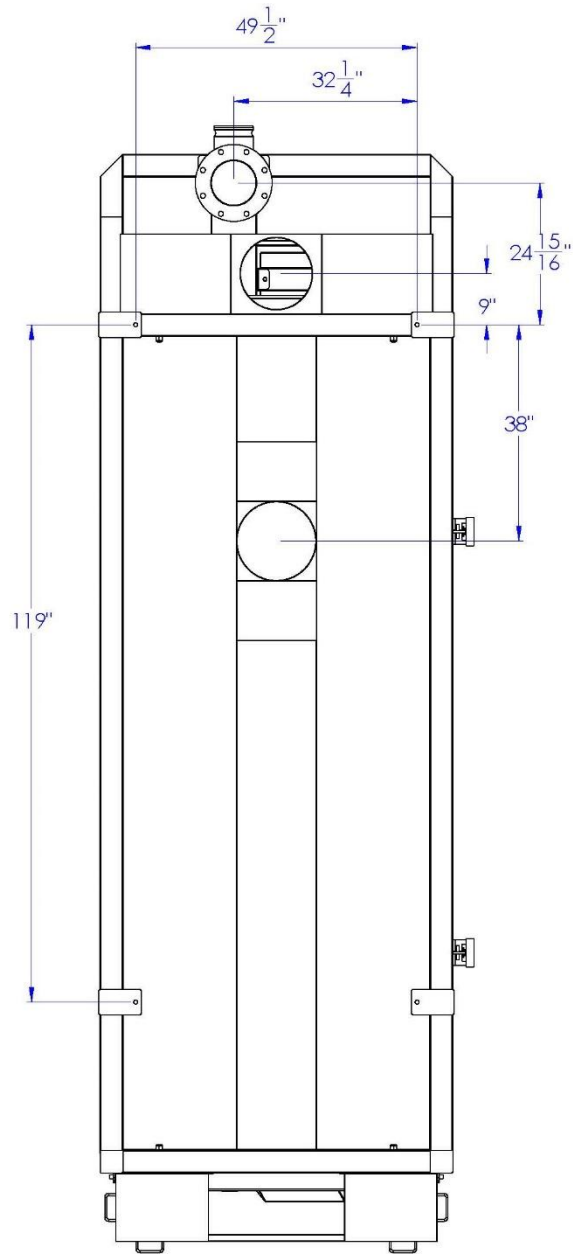
#
Quantity

Item #	Part #	Description	
1	G193	5 HP Air Knife Blower	
	U765	10 HP Air Knife Blower	
2	M787	Air Knife Blower Filter Assembly (Includes Filters)	
3	P166	48" DT360 Air Knife	
4	X572	48" DT360 Split Air Knife	
5	U516	3" Air Knife Gate Valve	<i>(Used if split configuration)</i>
	X708	4" Air Knife Gate Valve	<i>(Used if split configuration)</i>

# Overall Dimensions



### Overall Dimensions



---

For Technical Support, to order Replacement Parts, or for questions about other products,  
please contact your local dealer.

---